

Best practice, professional network infrastructure labelling

When it comes to network infrastructure labelling, don't leave it to chance, leave it to a Brother label printer. You'll be able to produce clear, durable laminated labels instantly on-site, helping you to achieve a professional and best practice finish every time.

When you choose a Brother label printer, you choose the best; with super-fast printing, efficient cutting, wireless connectivity plus a range of industry relevant symbols and templates at your fingertips, you're guaranteed to be more productive on-site.

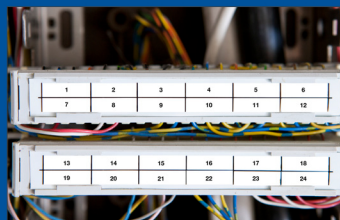
PT-E550WVP features:

- > Creates a wide range of warning notices and identification labels to lead with best practice as in the BS EN standard
- > Use Brother's range of free mobile applications to quickly print a range of templates or produce bespoke labels from 6 to 24mm wide
- > Pair the device with the Brother iLink&Label app to print any labels required for a project created in Fluke Networks Linkware Live™ software
- > Simple data transfer via USB or wireless connection
- > Smart label application keys – quickly access industry relevant templates such as cable wrap, cable flag, face plate and more
- > Easy to use QWERTY keyboard and large backlit LCD display
- > Handy carry case includes AC adapter, rechargeable battery, 9mm black on white Flexi ID 8m tape and 24m black on white Flexi ID 8m tape.



BEST PRACTICE LABELLING

Free mobile applications
available:



Punchdown block



Patch Panel



General Notices

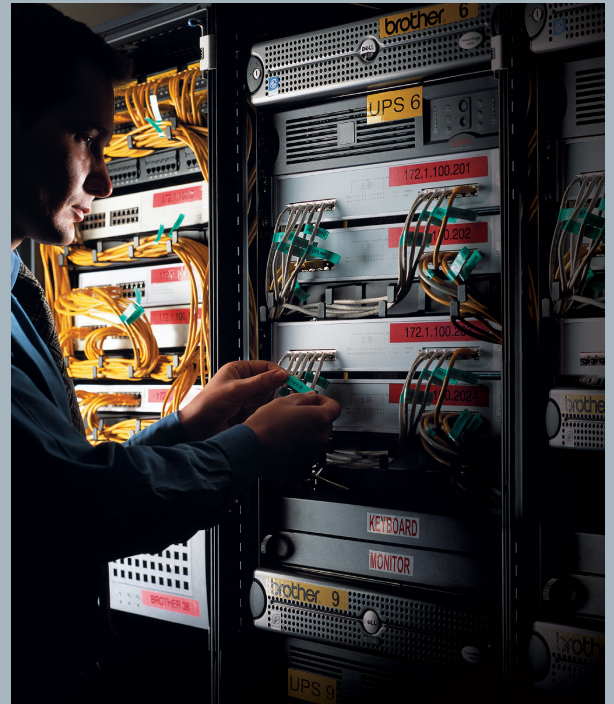


Cabinet ID

We know how important it is to comply with the BS EN standards

Clause 7.2 of BS EN 50174-1 regulations state:

- > Care shall be taken that labels are applied such that they are easily accessed, read and modified if required
- > Labels shall be robust and the markings shall remain and be readable/legible for the lifetime of the cabling
- > Labels shall not be affected by dampness or smudge when handled
- > Labels used in an outdoor or other harsh environments shall be designed to withstand the rigours of that environment
- > If changes are made (for example, a patch panel), labels shall be inspected to determine if the information recorded on the labels require to be updated.



That's why we've designed our P-touch laminated labels to last, wherever you use them. Our laminated tape technology means our labels are designed to stick around and ensure your text is protected. With excellent resistance to water, abrasion, chemicals, fading and temperature extremes, they'll never let you down. And their strong adhesion means when you label something on-site, it stays labelled.



Our extensive range of over 60 tapes in a variety of colours and widths include:

- > Standard laminated tapes with hardwearing and fade resistant laminated technology
- > Strong adhesive tapes ideal for irregular surfaces with 50% more strength to stay put in the most demanding environments
- > Flexible ID tapes specially formulated to wrap securely around wires and cables
- > Heat shrink tubing for robust cable identification
- > Security laminated tapes - when the label is peeled, it leaves behind a 'checkerboard' pattern indicating the label has been tampered with.



Fade resistant



Easy peel



Laminated



Water resistant



Temperature resistant



Abrasion resistant



Chemical resistant

