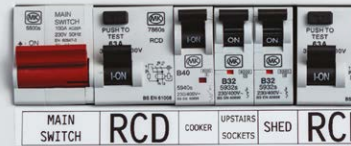


The Pro Tape range



Strong Adhesive



Flexible ID



Self-Laminating



Heat Shrink Tube



**Professional grade
labels for Trade**

**MARK OF A SMART
PROFESSIONAL**

New





Introducing the Pro Tape range

- 4 Tested to the Extreme
- 5 Strong Adhesive Tape
- 6 Flexible ID Tape
- 7 New Self-Laminating Tape
- 8 Security Tape
- 9 Heat Shrink Tube
- 10 Flag Label
- 11 Stencil Tape
- 12 Choose the right tape for the job
- 13 P-touch label printer compatibility
- 14/15 Available Pro Tape widths and colours

P-touch Pro Tapes are built with tough and durable professional grade materials and adhesives.

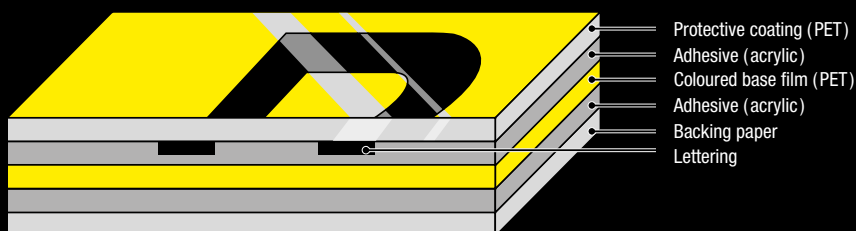
Choose the right tape for the job using this guide.



**MARK OF A SMART
PROFESSIONAL**

Tapes that are tested to the extreme

Brother P-touch laminated labels have been built to last, wherever you use them. With excellent resistance to water, abrasion, chemicals, fading and temperature extremes, they'll never let you down. Meaning when you label something on-site, it stays labelled.



Laminated



Temperature
Resistant



Water
Resistant



Fade
Resistant



Abrasion
Resistant



Chemical
Resistant



Strong
Adhesion



Our laminated tape technology

Laminated TZe tapes consist of six layers of materials, resulting in a thin, extremely strong label. Characters are formed with a thermal transfer ink and sandwiched between two protective layers of PET (polyethylene film). The result is a virtually indestructible label that can withstand even the toughest conditions.

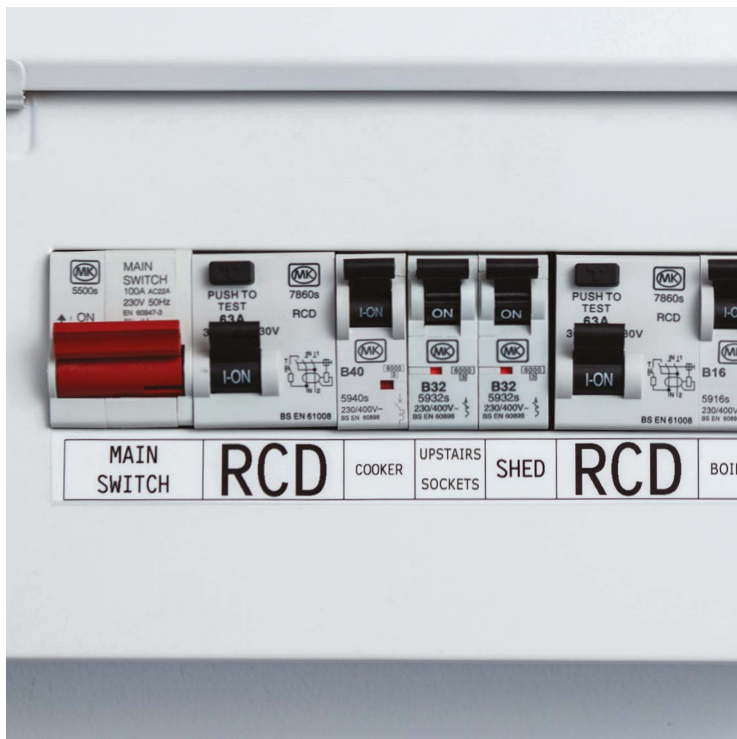
TZe Strong Adhesive Laminated

For smooth, rough, textured and powder coated surfaces. With 3 times more strength on textured surfaces, than Brother standard tape on average.

Recommended for:

- Warning signs and notices
- Distribution boards
- Consumer units
- Control gear and switch gear
- Electrical sockets and faceplates
- Electrical trunking and conduits
- Solar panels
- EV car charging points
- Racks
- Ports
- Patch panels
- Equipment and Telecommunications outlets

UL recognised as a component to UL969



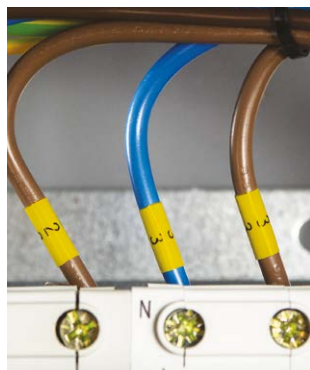
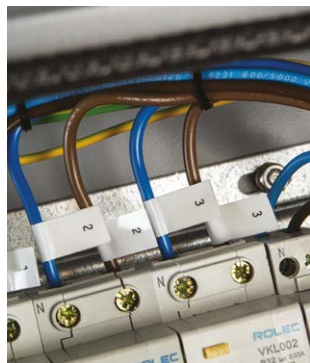
TZe Flexible ID Laminated

With a specially formulated adhesive to wrap securely around wires and cables with a diameter of 3mm or larger. Barcodes and other detailed information can be included on cable flags.

Recommended for:

- Electrical wires and cables
- Power cords
- LAN cables (patch cord or permanent link)
- Computer cables (USB cables, Data cables)

UL recognised as a component to UL 969



TZe Self-Laminating

Provides a protective layer over the printed area for cable marking. With our cost saving solution, text is laminated during printing which means 24mm tape is suitable for the larger diameter CAT6A cables.

Recommended for:

- LAN cables (patch cord or permanent link)
- Computer cables (USB cables, Data cables)
- Power cords

Ø3.0mm - 6.6mm (24mm), Ø3.0 - 10.4 (36mm)

UL recognised as a component to UL 969



New



TZe Security Laminated

When the label is peeled, it leaves behind a 'checkerboard' pattern indicating the label has been tampered with.

Recommended for:

- Equipment after calibration
- Computers / electronic devices
- Other company property and assets
- Items sealed for security

UL recognised as a component to UL 969



HSe 3:1 Heat Shrink Tube

**Printable tube, when shrunk down it ensures a secure fit on wires and cables.
Shrink ratio 3:1.**

Recommended for:

- Electrical wires
- Cables

See page 12 for recommended cable diameters.

UL recognised as a component to UL224

Continuous temperature rating: 125°C

Voltage rating: 600V

Flammability rating: VW-1



FLe Flag

Die cut non-laminated flag label. New improved single label design makes it very simple to apply once printed. Wide printable area for barcodes and other information.

Recommended for:

- LAN cables (patch cord, permanent link, CAT5e, CAT6)
- Fibre Optic cables

Ø2.0mm - 8.0mm

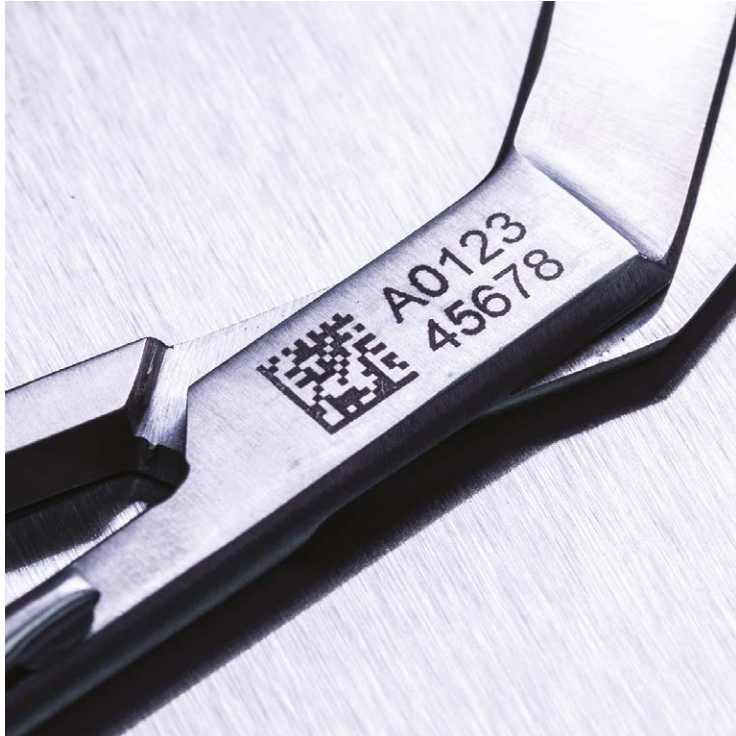


STe Stencil

Non-adhesive tape used as a mask to permanently mark (etch) conductive surfaces using electrolytic marking chemicals and equipment, or to mark (etch) glass using a glass etching paste.

Recommended for:

- Use on metallic and glass surfaces
- Permanent part marking
(e.g. aerospace industry, motor industry, manufacturing, medical/healthcare)
- Product marking and customisation (e.g. scissors, knives)



Choose the right tape for the job

	WIRE AND CABLE IDENTIFICATION				GENERAL IDENTIFICATION		
SURFACE	Flexible ID	Self-Laminating	Heat Shrink Tube	Flag	Strong Adhesive	Security	Stencil
Smooth surfaces	✓				✓	✓	✓
Textured surfaces	●				✓	●	
Cable wrap	✓	✓	✓				
Cable flag	✓			✓			

✓ Recommended
 ● Acceptable

HEAT SHRINK TUBE (3:1)	Tape	Width	Recommended cable diameters
	HSe-211E	5.2mm	Ø0.8mm to 3.1mm
	HSe-221E	9.0mm	Ø1.6mm to 5.4mm
	HSe-231E	11.2mm	Ø2.1mm to 7.0mm
	HSe-251E	21.0mm	Ø4.2mm to 13.5mm
	HSe-261E	31.0mm	Ø6.3mm to 20mm
	HSe-611E	5.2mm	Ø0.8mm to 3.1mm
	HSe-621E	9.0mm	Ø1.6mm to 5.4mm
	HSe-631E	11.2mm	Ø2.1mm to 7.0mm
	HSe-651E	21.0mm	Ø4.2mm to 13.5mm
	HSe-661E	31.0mm	Ø6.3mm to 20mm

P-touch label printer compatibility

		TAPE TYPE						
MODEL	Max tape width	Strong Adhesive	Flexible ID	Security	Heat Shrink Tube	Self-Laminating	Flag	Stencil
PT-E110	12mm	✓	✓					
PT-E300	18mm	✓	✓	✓	✓			
PT-E550W	24mm	✓	✓	✓	✓	✓		
PT-D800W	36mm	✓	✓	✓	✓	✓	✓	✓
PT-P900W PT-P950NW	36mm	✓	✓	✓	✓	✓	✓	✓

Pro Tape widths and colours

TZe STRONG ADHESIVE LAMINATED - 8 M						
	6mm	9mm	12mm	18mm	24mm	36mm
Black on white	TZe-S211	TZe-S221	TZe-S231	TZe-S241	TZe-S251	TZe-S261
Black on transparent		TZe-S121	TZe-S131	TZe-S141	TZe-S151	
Black on yellow		TZe-S621	TZe-S631	TZe-S641	TZe-S651	
TZe FLEXIBLE ID LAMINATED - 8 M						
Black on white	TZe-FX211	TZe-FX221	TZe-FX231	TZe-FX241	TZe-FX251	TZe-FX261
Black on yellow	TZe-FX611	TZe-FX621	TZe-FX631	TZe-FX641	TZe-FX651	TZe-FX661
TZe SELF-LAMINATING - 8 M						
Black on white					TZe-SL251	TZe-SL261
Black on yellow					TZe-SL651	TZe-SL661
TZe SECURITY LAMINATED - 8 M						
Black on white				TZe-SE4	TZe-SE5	
STe STENCIL - 3 M						
Black on white				STe-141	STe-151	STe-161

FLe FLAG (DIE-CUT) - 72 LABELS

Black on white	FLe-2511*
Black on yellow	FLe-6511*
Black on green	FLe-7511*

HSe 3:1 HEAT SHRINK TUBE - 1.5 M	5.2mm	9.0mm	11.2mm	21.0mm	31.0mm
Black on white	HSe-211E	HSe-221E	HSe-231E	HSe-251E	HSe-261E
Black on yellow	HSe-611E	HSe-621E	HSe-631E	HSe-651E	HSe-661E

* Labels are: 45mm x 21mm when printed. 45mm x 10.5mm once applied.



brother
at your side

P-touch

Contact:

brother.dk
brother.ee
brother.fi
brother.is
brother.lv
brother.lt
brother.no
brother.se

All specifications correct at the time of printing and are subject to change. Brother is a registered trademark of Brother Industries Ltd. Brand product names are registered trademarks or trademarks of their respective companies.