



Pro Labelling Machines

Produce clear, durable
labels instantly on-site



The E-Series line-up



PT-E110VP



PT-E560BTVP / PT-E560BTSP

Built with electricians and network professionals in mind, the Brother E-Series offers a professional labelling solution for any electrical or datacom installations. Ensuring cables, conduits, switches and sockets are clearly identified with long-lasting, durable labels is essential for electricians, datacom, telecom and security equipment installers.

With built-in, industry-specific functions and quick applications keys, as well as Bluetooth connectivity*, Brother E-Series labelling machines empower workers to produce clear and durable labels quickly and efficiently on-site.

*PT-E560BT only

Summary of features

Easy to use built-in QWERTY keyboard

Easy to read LCD display

Automatic cutter with half-cut function

USB connectable for PC printing

Bluetooth connectivity

Print labels containing 2D barcode & QR code

Advanced label design software (PT Editor 6.0)

Design and print labels using Brother Pro Label Tool App

Compatible with Brother durable laminated TZe tapes

Max. tape width

Max. print speed

PT-E110

PT-E560BT



12mm

20mm/sec



24mm

30mm/sec*

*When connected using AC Adapter (PA-AD-004)

PT-E560BTVP PT-E560BTSP



Create durable labels via the built-in, easy-to-use labelling functions, PC software or simply connect to a smartphone or tablet via Bluetooth and use the Brother Pro Label Tool app

Easy to read, large backlit graphic display

Prints durable labels up to 24mm wide

Specialist tapes available including strong adhesive, flexible ID, heat shrink tubing and self-laminating

Fast print speeds of up to 30mm/sec and automatic (full & half) cutter with easy peel function to print multiple labels in one continuous strip

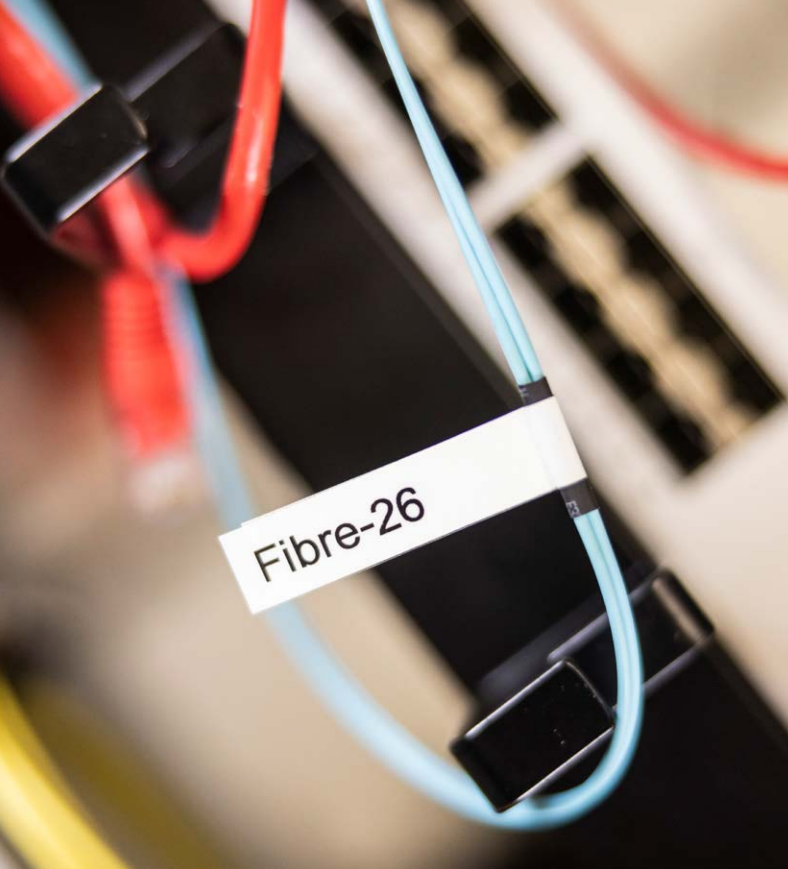
6x one-touch industry application keys for general, faceplate, cable flag/wrap, punch down block and patch panel identification

Print labels containing QR code/2D barcode and logos

PT-E560BTVP: Includes carry case, rechargeable Li-ion battery, USB Type-C cable (1m, black), 1x 12mm black on white flexible ID tape, 1x 24mm black on yellow strong adhesive tape

PT-E560BTSP: Includes carry case, rechargeable Li-ion battery, USB Type-C cable (1m black), 1x 18mm black on white strong adhesive tape, 1x 24mm black on white strong adhesive tape, 1x 24mm black on yellow strong adhesive tape, 1x 12mm black on white flexible ID tape





PT-E110VP

Create durable labels using the built-in, easy-to-use QWERTY keyboard and dedicated labelling functions

Easy to read LCD screen

Prints durable labels up to 12mm wide

Specialist tapes available including strong adhesive and flexible ID

Print speeds up to 20mm/sec and built-in manual cutter

Includes carry case, AC adapter, 9mm black on white flexible ID tape, documentation

Tapes that are tested to the extreme

| 6mm | 9mm | 12mm | 18mm | 24mm |



TZe STRONG ADHESIVE LAMINATED - 8 M



For smooth, rough, textured and powder coated surfaces. With 3 times more strength on textured surfaces, than Brother standard tape on average.

Black on white	TZe-S211	TZe-S221	TZe-S231	TZe-S241	TZe-S251
Black on transparent		TZe-S121	TZe-S131	TZe-S141	TZe-S151
Black on yellow		TZe-S621	TZe-S631	TZe-S641	TZe-S651



TZe FLEXIBLE ID LAMINATED - 8 M



With specially formulated adhesive to wrap securely around wires and cables with a diameter of 3mm or larger.

Black on white	TZe-FX211	TZe-FX221	TZe-FX231	TZe-FX241	TZe-FX251
Black on yellow	TZe-FX611	TZe-FX621	TZe-FX631	TZe-FX641	TZe-FX651



TZe SELF-LAMINATING - 8 M



Provides a protective layer over the printed area for cable marking. Our cost-saving solution laminates text during printing, which means 24mm tape is suitable for larger diameter CAT6A cables.

Black on white					TZe-SL251
Black on yellow					TZe-SL651



TZe SECURITY LAMINATED - 8 M



When the label is peeled, it leaves behind a 'checkerboard' pattern indicating the label has been tampered with.

Black on white				TZe-SE4	TZe-SE5
-----------------------	--	--	--	---------	---------

| 5.2mm | 9.0mm | 11.2mm | 21.0mm |



HSe 3:1 HEAT SHRINK TUBE - 1.5M

Printable tube, when shrunk down it ensures a secure fit on wires and cables. Shrink ratio 3:1.

Black on white	HSe-211E	HSe-221E	HSe-231E	HSe-251E
Black on yellow	HSe-611E	HSe-621E	HSe-631E	HSe-651E

Choose the right tape for the job

To ensure your labels stay affixed, it is important to use the correct tape for each of your labelling applications. The chart below shows you the recommended tape to use for each application.

SURFACE	WIRE AND CABLE IDENTIFICATION			GENERAL IDENTIFICATION	
	Flexible ID	Self-Laminating	Heat Shrink Tube	Strong Adhesive	Security
Smooth surfaces	✓			✓	✓
Textured surfaces	●			✓	●
Cable wrap	✓	✓	✓		
Cable flag	✓				

✓ Recommended ● Acceptable

HEAT SHRINK TUBE



Tape	Width	Recommended cable diameters
HSe-211E / HSe-611E	5.2mm	Ø 0.8mm to 3.1mm
HSe-221E / HSe-621E	9.0mm	Ø 1.6mm to 5.4mm
HSe-231E / HSe-631E	11.2mm	Ø 2.1mm to 7.0mm
HSe-251E / HSe-651E	21.0mm	Ø 4.2mm to 13.5mm



Tapes that are tested to the extreme

Brother P-touch laminated labels have been designed to last, wherever you use them. Our laminated tape technology means our labels are designed to stick around and ensure your text is protected. With excellent resistance to water, abrasion, chemicals, fading and temperature extremes, they'll never let you down. And their strong adhesion means when you label something on-site, it stays labelled.



Laminated



Temperature
Resistant



Water
Resistant



Fade
Resistant



Abrasion
Resistant



Chemical
Resistant



Easy
Peel



Strong
Adhesion



Choose from:

- Strong adhesive tapes ideal for irregular surfaces, with three times more strength to stay put in the most demanding environments
- Flexible ID tapes specially formulated to wrap securely around wires and cables
- Heat Shrink tubing for robust cable identification
- Self-laminating tapes for CAT5E / CAT6A network cabling
- Security laminated tapes - when the label is peeled, it leaves behind a 'checkerboard' pattern indicating the label has been tampered with.



Find out more about the Pro Tape range
brother.eu/supplies



Built for Electricians

The Brother E-Series models offer a professional, durable solution for all key labelling tasks within the electrical environment. With super-fast printing, efficient cutting, Bluetooth connectivity*, plus industry symbols and templates at your fingertips, you're guaranteed to be more productive on-site.

When it comes to wiring regulations, don't leave it to chance: leave it to a Brother electrical label printer. With a range of built-in industry specific functions and tapes that are fit-for-purpose, you'll be able to produce clear and durable labels instantly on-site, helping you to achieve a professional and compliant finish.

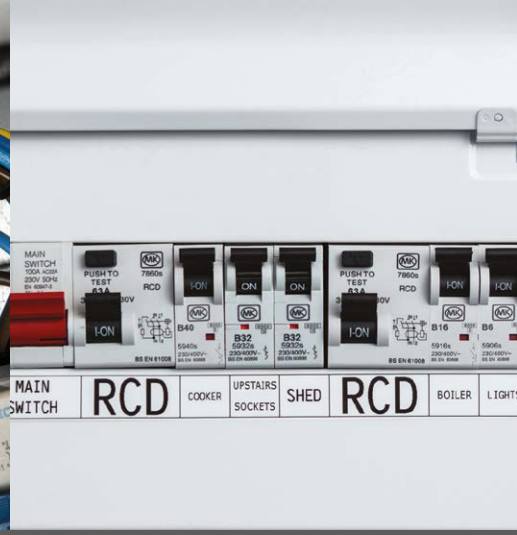
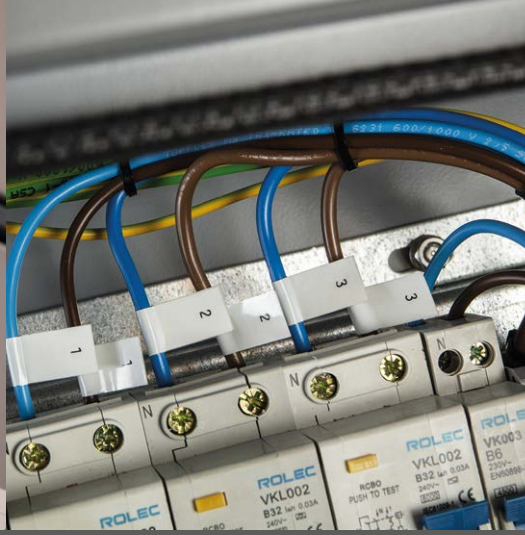
Brother labelling machines are built to last and create labels that match, so your safety warnings, guidance notices and identification labels will stick around wherever you apply them.

*PT-E560BT only

Applications include:

- Distribution board/consumer units
- General warning/danger signs
- Cable identification
- Electrical trunking/conduits
- Lighting & sockets
- Control gear & switch gear
- PAT testing





The best way to stay compliant

Every professional knows how important it is to work to the current wiring regulations. The table below shows how our products can help you meet each of the specific labelling requirements, helping you stay compliant and keep your work safe.

MARK OF A SMART PROFESSIONAL

PT-E110

PT-E560BT

Regulation	Summary	PT-E110	PT-E560BT	Tape recommended
514.1 General - ID and Notices	Identification of purpose of switch gear and control gear and warning notices where appropriate	Some	✓	Black on white 12/18/24mm Black on yellow 12/18/24mm
514.2 Wiring systems	Identification of wiring for inspection, testing, repairs or alteration	✓	✓	Black on white 9/12mm
514.3 ID of conductors by lettering and/or numbering	Legible and durable identification of conductors in letters & Arabic numbers. Underlining '6' & '9' where unattached to avoid confusion.	✓	✓	Black on white 9/12mm
514.4 ID of a protective device	Clear identification of protective devices	✗	✓	Black on white 18/24mm



Built for Network professionals

Whether it's in a data centre or outdoor fibre installation, leave the mark of a smart professional with durable, long-lasting identification labels that meet industry standards and help you comply with your networking identification needs.

The Brother E-Series create labels that help address ANSI/EIA/TIA-606A/B, and that meet the UL-969 standards, so you can be sure that you're working with high-quality, industry-compliant labels.

Furthermore, these portable label printers have dedicated quick keys and functions to empower mobile workers to create labels for a range of key labelling tasks quickly and efficiently.

Applications include:

- Racks & Cabinets
- Port ID
- Patch panels
- Equipment & Telecoms outlets
- LAN Cables (Patch cord or permanent link)
- Fibre optic cables

Brother iLink&Label

Save time. Reduce errors. Amplify productivity.

Brother's professional labelling machines* integrate seamlessly with LinkWare Live via the Brother iLink&Label app to provide the ultimate on-the-job workflow solution for large network labelling projects.

Simply download Brother's iLink&Label app and connect to your Fluke Networks LinkWare live project, select the required cable identifiers and wirelessly transfer them directly to your Brother label printer at the click of a button – it's that simple!

*PT-E560BT only

LinkWare Live





Brother Pro Label Tool App

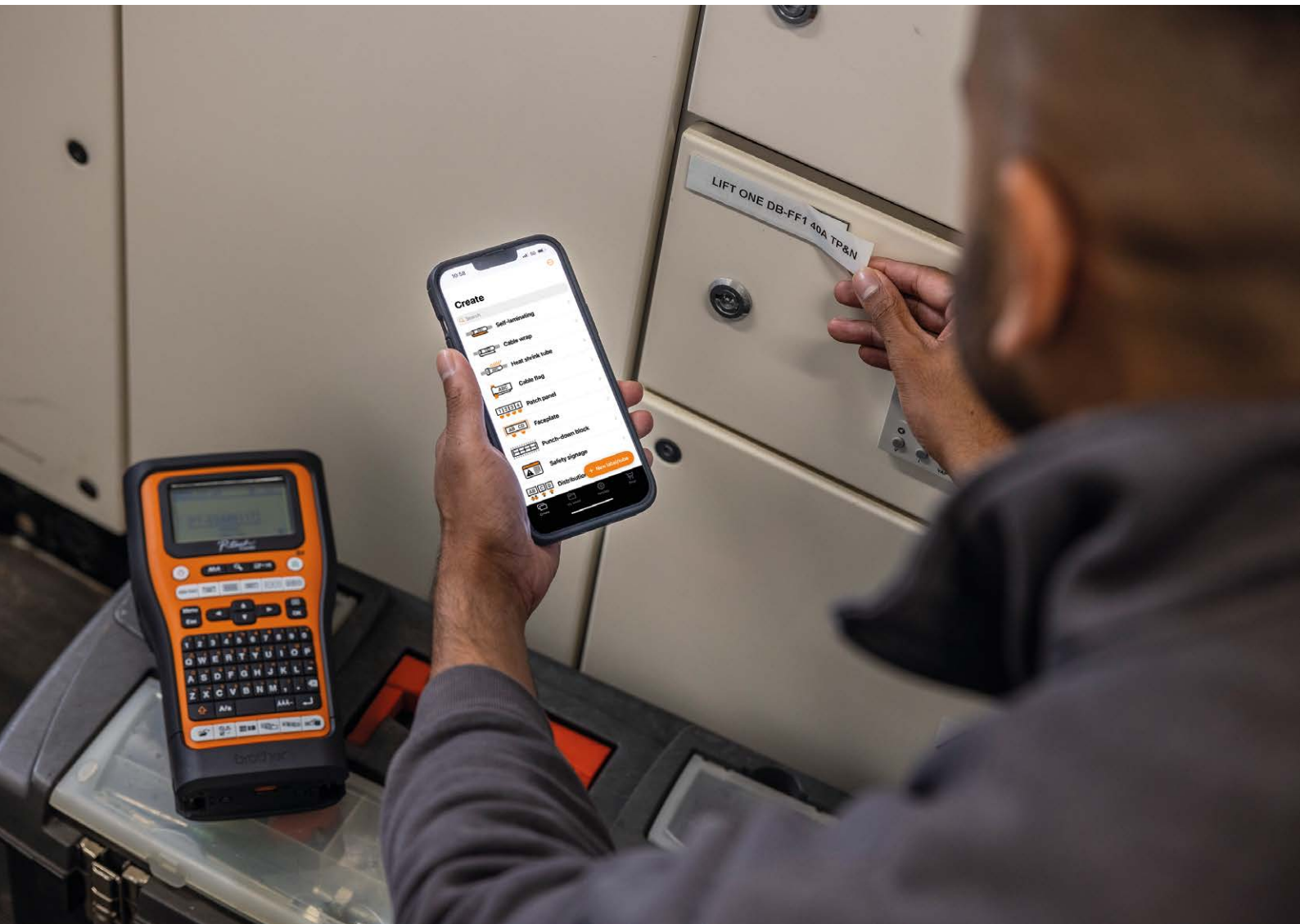
Brother's professional labelling machines support our free Pro Label Tool app for Apple and Android mobile devices. With its wide range templates, such as danger and caution signs and cable identification, you can quickly and conveniently design compliant labels on your smartphone or tablet to print wirelessly on your labelling machine. All you need to do is download the application and then search for your supported device.

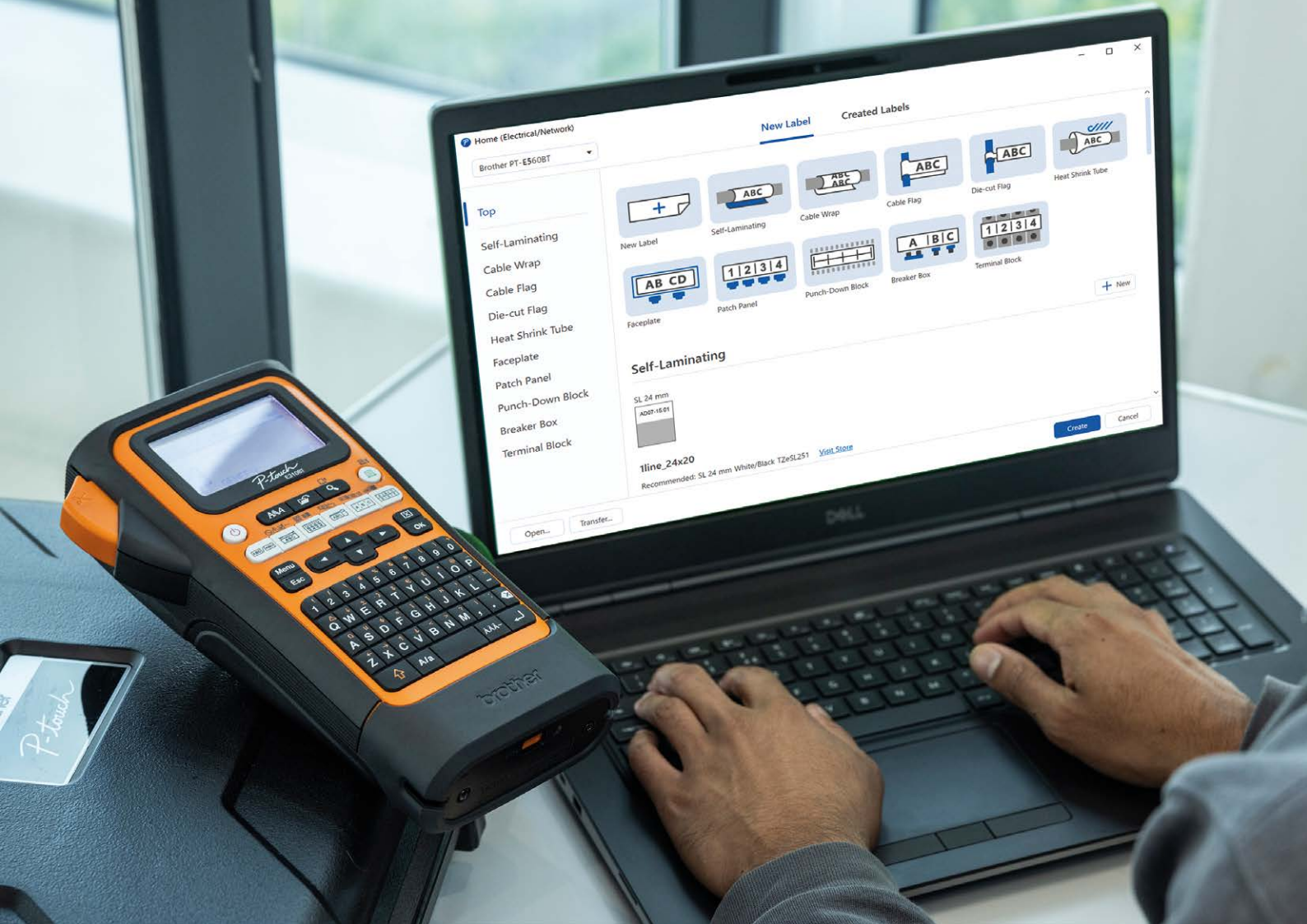
Key features:

- Easily connect to your label printer via Bluetooth
- Create and edit your own professional, durable labels
- Ready-to-print industry templates
- Ensure compliance with wiring regulations and standards
- Customise templates with personal information or company logos



Download Now





PT Editor 6.0

Supplied as standard, you can create and print your own custom labels with pixel precision from your PC using Brother's free label editing software. P-touch editor 6 boasts a user-friendly interface with a wide range of pre-designed, ready-to-print label templates for the most common electrical and datacom applications.

Key features:

- Choose from ready-made label templates or create your own labels from scratch
- Customisable templates for flexible editing with over 1200 symbols and 30+ fonts
- Easily find labels you've created in the past, or share labels to Brother label editing apps on your smartphone
- Import data from excel and other databases directly onto labels
- Straightforward barcode/2D code label creation
- Customise labels to include your company logo

brother

at your side

Contact:

brother.dk
brother.ee
brother.fi
brother.is
brother.lt
brother.lv
brother.no
brother.se

All specifications correct at the time of printing and are subject to change. Brother is a registered trademark of Brother Industries Ltd.
Brand product names are registered trademarks or trademarks of their respective companies.