

The QL-720NW offers IT managers a professional multi-user networked solution for label printing in busy offices.

## Effortless label printing - for all applications

The QL-720NW uses Brother DK label rolls. Supplied on a spool that incorporates a roll guide, this ensures that the label is always installed correctly, and recognises the size of label inserted, and you get none of the alignment problems associated with printing labels in a traditional printer. So whether you are printing just one label, or several at a time, the Brother QL-720NW ensures each label prints perfectly, time after time.

### Technical Specifications

#### Items included

QL-720NW Professional Label Printer  
2 x starter rolls:  
- 29 mm x 90 mm standard address labels (100 labels)  
- 62 mm continuous length paper tape (8 metres)  
USB and power cables  
CD-ROM containing label design software, printer drivers and user guides  
Quick setup guide and warranty card

#### QL-720NW Label printer

Dimensions 128 mm(W) x 236 mm(D) x 153 mm(H)  
Weight 1.20kg (excluding DK roll)  
Control panel buttons 4: (power, WiFi, feed, cut)  
Cutter Durable auto cutter  
Power supply Internal power supply  
Print method Direct thermal  
Roll type DK rolls (DK die-cut labels / DK continuous length tape)  
Max. roll / print width 62 mm / 59 mm  
Min. /Max. label length 12.7 mm / 1 metre  
Print head resolution 300 dpi / 720 dots  
Print speed 150 mm/sec : 93 standard address labels/min (USB)  
10/100 Base TX Wired LAN : USB 3.0 (full speed)  
Interface IEEE 802.11b/g/n Wireless LAN

#### Software

**P-touch Editor Lite LAN**  
All installed truetype fonts  
4 styles: Normal, Bold, Italic, Underline  
  
Number of frames 10  
Image file formats support BMP, JPG, JPEG, PNG, TIF, GIF, DIB, WMF, EMF, ICO  
Screen capture Yes  
Multi line printing Yes  
Multi block printing Yes  
Vertical printing Yes  
Rotate printing Yes  
Number of copies 2 - 200  
Mirror printing No  
Sequential numbering 1 - 200 / A - Z / a - z  
Barcode protocols No

Database / file link support No  
Add-in support No  
Automatic date and time printing No  
Languages English / Danish / Dutch / French / German / Italian / Norwegian / Portuguese / Spanish / Swedish / Finnish / Czech / Polish / Hungarian / Simplified Chinese / Slovak / Slovene / Romanian / Croatian / Bulgarian / Russian / Turkish / Japanese / Traditional Chinese / Korean / Traditional Chinese / Korean / Thai / Vietnamese

#### System requirements PC/Mac®

Operating System Windows® XP SP3 or higher, Windows Vista® Windows® 7, Windows Server® 2003, Windows Server® 2008/2008 R2 Mac OS X 10.5.8 - 10.7  
Minimum CPU As recommended by operating system specification  
Hard Disk Free Space Windows®:70MB or more | Mac:200MB or more  
USB Port USB Spec. 1.1, 2.0 or 3.0 protocol  
Wireless LAN IEEE 802.11b/g/n  
Wired LAN 10/100 BASE-TX  
Graphics 800x600 pixels / 16 bit colour depth minimum  
Other CD-ROM / DVD-ROM drive



QL-720NW

brother  
at your side



### Professional Wired & Wireless Network Label Printer

Having both wired and wireless networking, the QL-720NW is the professional solution for labelling on demand.

[www.brother.eu](http://www.brother.eu)

- Built-in 10/100 Base-TX network port
- Built-in IEEE 802.11 b/g/n wireless LAN
- Print up to 93 labels/minute and up to 300 x 600 dpi
- Built-in automatic label cutter
- Includes 2 rolls of labels and software

Contact:

brother  
at your side

Brother International Europe Ltd  
Brother House, 1 Tame Street  
Audenshaw, Manchester  
M34 5JE  
Tel: 0161 330 6531; Fax: 0161 931 2537





## Give your company a professional image

Achieve a more professional finish and improve office efficiency through the use of labelling. Envelopes, packages and parcels can be professionally addressed using one of the many sizes of label available, and can even include your business logo if required. Within your organisation, ensure important information can be located quickly through the clear identification of files, folders, CD and DVD discs.



**10/100 BASE-TX NETWORK**  
Offers the most reliable networking connection for sharing between multiple users.



**EASY TO CHANGE ROLLS**  
Each roll is supplied on a spool that simply slots into the correct position in the printer every time.



**WIRELESS & USB INTERFACES**  
Connect to one PC using the USB interface, or multiple PC's using wireless LAN.



**PRINT LABELS THE SIZE YOU NEED**  
Create labels from 12.7mm up to 1 metre in length, using the built-in automatic cutter.



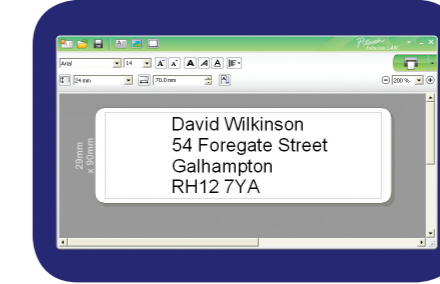
**UP TO 300 x 600 DPI PRINT RESOLUTION**  
Produce easy-to-read labels with crisp text and high quality graphics.



**UP TO 93 LABELS/MINUTE**  
If you are printing one or several labels at a time, the QL-720NW will have them ready in just a few seconds.

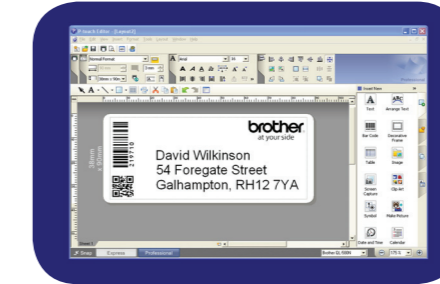
## Professional built-in wired & wireless networking

Networked devices offer much more flexibility than a single user solution. Multiple users can now connect to one machine, so all can benefit by producing professionally printed, customised labels whenever required. By offering both wired and wireless networking as standard, the label printer can be placed anywhere within your organisation.



### P-touch Editor Lite LAN

This networked label design software is easy to set up and use. Simply copy the files to a shared network drive that all users have access to, and when first run it will automatically find the networked QL-720NW and place a shortcut on the user's PC. No printer driver or software needs to be installed on each user's PC.



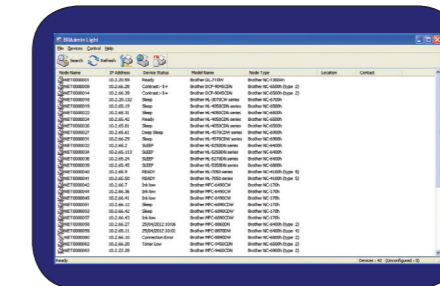
### P-touch Editor 5

This professional label design software offers integration with Microsoft Word, Excel and Outlook so you can print labels directly from these applications. Simply highlight the address, text or information you require, then click the "P-touch" icon in the toolbar to print your label immediately. Barcodes, graphics, frames and other information can be added to your labels, whatever your requirements may be.



### Brother iPrint & Label

With the free Brother iPrint & Label app, you are now able to quickly and easily create and print labels directly from your iOS or Android device to your Brother QL-720NW. Available through your device's app store.



### BR Admin Light

Currently used by network administrators to configure Brother inkjet and laser printers, this powerful software can now also be used to set-up and install the QL-720NW onto your corporate network, making one solution for all Brother networkable products.



Pre-Sized Paper Labels



Continuous Label Tape

