



TD-4000 / TD-4100N Professional barcode label printers

High specification, high speed label printers that include barcode label design software, built-in cutters and networking.

- Accepts up to 4" / 102 mm wide labels
- Fast 110 mm/second print speed
- Powerful barcode label design software included
- No tear-bar needed as built-in cutter included
- Print from various operating systems/software using Brother ESC/P printer language
- Design, upload and print pre-designed label templates



Professional label printers

Professional label printers for all labelling applications

Brother has been developing label printing technology for more than twenty years, and the TD-4000 and TD-4100N both offer the ability to print high quality labels on demand, whatever the label requirement. Printing labels up to 4"/102 mm in width, and at a speed of up to 110 mm/second, these two fully featured machines also offer a built-in cutter as standard to avoid the need of a cumbersome tear-bar. Furthermore, you can create labels of any length, from 25 mm right up to 3 metres, by installing a continuous label roll and cutting to the correct size.

These professional label printers include cutters, software and networking as standard - often found as options on other manufacturers models

Powerful software

P-touch Editor label design software is included as standard, giving you the ability to create any label required, without the additional cost of purchasing label design software. It supports the most common 1D and 2D barcode protocols, importing of graphic images, and even merging of data contained in Excel and MSDE/SQL databases onto your labels.

Brother can also supply an SDK (Software Development Kit) to give you an easy method of incorporating label printing directly from within your own software programs, or you can use the printer's built-in ESC/P and template modes to print from non-windows based PC's and other devices.

	TD-4000	TD-4100N
Print resolution of 300 dpi	✓	✓
Print speeds of up to 110 mm/second	✓	✓
Accepts label rolls up to 102mm in width	✓	✓
Easy installation of label rolls	✓	✓
Professional label design software included	✓	✓
Built-in cutter	✓	✓
Print up to 9,999 labels per print job*	✓	✓
Supports over 15 popular 1D & 2D barcode protocols*	✓	✓
Link to data in .xls, .mdb files & SQL server databases*	✓	✓
Automatic date/time printing capability*	✓	✓
Advanced image dithering for high-quality images*	✓	✓
Network ready		✓
Network printer administration software included		✓
Windows Server 2003 support		✓
Windows Server 2008 support		✓

* Using P-touch Editor 5 label design software

With an advanced 10/100 base TX network port as standard, the TD-4100N label printer can be placed anywhere that labels are required

Built-in networking

The professional and reliable method of connecting label printers is typically via a network, and the TD-4100N incorporates a 10/100 Base TX network port as standard. By giving the opportunity to locate the label printer away from the PC, you have the advantage of being able to place the label printer wherever your labels are required. And of course, networking offers the ability for any number of users or computers to print their labels to the same label printer. If many copies of labels are required quickly, the "distributed printing" function (found in the printer driver) will automatically send the print job to two or more connected printers - thereby increasing throughput. As an example, if two TD-4100N label printers are set up for distributed printing and 10 copies of a label are required, the driver will automatically send five labels to one printer, and five labels to another.



By connecting the TD-4100N to a nearby network point, the machine can be sited wherever the labels are required



Web based management

IT departments can remotely configure the TD-4100N thanks to the advanced built-in web based management. By logging into the printer using your web browser, the network settings can be configured. Should a problem arise with the printer, the current status and error can also be viewed remotely.

BR Admin

The TD-4100N is also fully compatible with the Brother BR Admin software. This powerful software is a professional management tool that can manage your Brother network-connected products. It can also be used to view the status of other SNMP compliant network printing devices. So if you have several Brother label printers, or indeed other Brother networked products, they can all be centrally managed from one simple user interface.



4.7KG 1/1

AUGUST EXP

TRICE EXPRESS 4.7KG 1/1

JANA KESTICH
BOKUN INTERNATIONAL
IN BURGHEIMEN AT
6118 BAD VILBEL
AUSTRIA
TEL: +43 622 899 7327

DELIVERY DATE	SERV
22 AUGUST	EXP

Warehousing and logistics

With the most common sizes of shipping labels available for the TD-4000 and TD-4100N, and the ability to create custom sized labels using the built-in cutter, there are many uses for these models in the warehouse. Brother RD label rolls are made of high quality materials, ensuring the printed text and barcodes stay readable on the label while items are being shipped.



Address labels can be created quickly and easily - you can even incorporate logos or other graphics



The continuous roll offers the ability to create temporary signage on demand



Create temporary warehouse racking identification labels as and when required



Barcodes, company logos and other information is easily printed up to 4 inch/102 mm wide

Typical applications include:

- Shipping labels
- Barcode labels
- Part bin identification
- Temporary warehouse racking identification labels
- Location labels
- Signage
- Pallet identification labels



GAVIN HENSON

13 OCTOBER

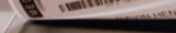
18:35



782-E-0843-33

NAME: GAVIN HENSON
DATE: 13 OCTOBER
TIME: 18:35

NAME: GAVIN HENSON
DATE: 13 OCTOBER
TIME: 18:35



782-E-0843-33

Healthcare, medical and laboratory

With the strict regulations on the tracking of patient specimens and other items within the healthcare industry, clear, high quality labelling is essential to maintain safety and traceability. The Brother TD-4100N, with its integrated 10/100 Base TX network port gives the chance to place the machine away from the PC, wherever the labels are needed. With support for the most common barcode protocols, both models are ideally suited to any labelling task.



Ensure that patients' specimens are clearly and correctly identified



Locate patients' records and other important documentation quickly with an identification label



A large amount of data can be recalled instantly by including a 2D barcode on the label



Labels are available in a range of different sizes for the most common labelling applications

Typical applications include:

- Appointment cards
- Admission labels
- Specimen and pathology labels
- Blood bank labels
- Microscope slide labels
- Laboratory labels
- Microbiology labels



SUB

CONDIMENT
D - Z

DRINK
MODIFY

EXTRA

bar text

PRINT CONNECT FEED EXIT

Up to 20% off market
Sale

TD-4100N

RECEIPT
DATE: 12/12/2023
TIME: 14:30
CASHIER: J. SMITH
TOTAL: \$120.00
TAX: \$12.00
TOTAL: \$132.00
GROSS: \$132.00
NET: \$132.00
CASH: \$132.00
CASH TENDERS: \$132.00
CASH REFUND: \$0.00
CASH BALANCE: \$0.00
CASH TOTAL: \$132.00
CASH BALANCE: \$0.00
CASH TOTAL: \$132.00

Retail and food applications

Easy to read labels are essential to consumers, to help make informed decisions prior to a potential purchase. The 300dpi print resolution and high quality RD label rolls used in the TD-4000 and TD-4100N ensures that every label printed looks professional, offering sharp text, logos and barcodes with a high contrast to ensure faultless scanning at the checkout.



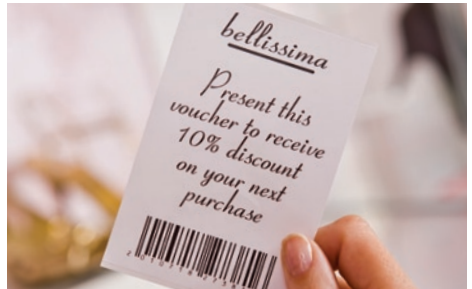
Ensure your customers have all the product and ingredient information required



You can immediately create temporary in-store signage using the continuous length label roll



Instantly create and replace shelf-edge labels as stock items change in-store



Offer loyalty discounts, or other incentives, to your valued customers with specially printed vouchers

Typical applications include:

- Pricing labels
- Barcode labels
- Pre-packaged food ingredients labels
- Nutrition information labels
- Shelf-edge labels
- In-store signage labels
- Sale/mark-down/discount pricing labels



Professional software solutions

P-touch Editor 5

Supplied as standard, you can create your own custom labels with pixel precision by using this powerful software solution. With features such as support for over 15 barcode protocols, advanced image dithering to print high quality greyscale images, and the ability to link to data contained in Excel spreadsheets for batch printing of labels, any label design is possible.

P-touch Template printing*

By designing labels on your PC, and then uploading them to the printer's memory, simply send the text or barcode data to be added to the label, and the machine will create and print the new label as required. You can also print labels without a PC connection - for example connect directly to a barcode scanner to print copies of barcodes.

* may require printer firmware update for this feature

b-PAC Software Development Kit

Developed for advanced users such as system integrators, by adding just a few lines of programming code, label printing is possible from many Microsoft® Windows™ applications.

- Create a label template using P-touch Editor 5 and save the file to your PC.
- Using the b-PAC SDK, send the relevant commands to add your text/barcode/images to the label template.
- Issue the print command from your program.
- The b-PAC SDK will then create and print the label containing your information.

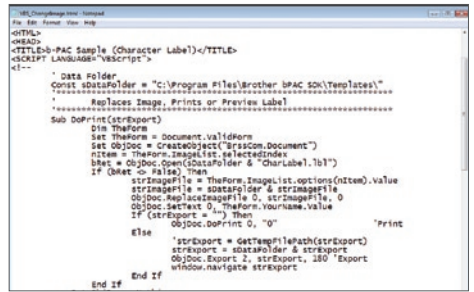
More details can be found at <http://www.brother.com/bpac>

Brother ESC/P printing

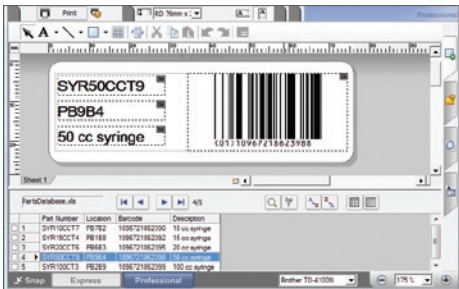
Connect to non-windows devices using the RS-232 serial port. By sending simple text commands containing the label format and the text/barcode to be printed, the labelling machine will print the label required. No driver or software needs installing.



P-touch Editor 5 gives you the creative options to design and print any label required



Use the b-PAC SDK to add label printing directly within your own Windows™ applications



By linking to a Microsoft® Excel™ file, merge the data and print labels directly from P-touch Editor 5



Connect a barcode scanner to the printer's serial port to print labels directly from the TD-4000/TD-4100N*



Brother RD label rolls are made of high quality paper, and are easy to install

Brother RD label rolls

The TD-4000 and TD-4100N use Brother RD labels. Available in die-cut and also continuous length rolls, they offer high quality printing, added protection against marking and scuffing and are available in various sizes. In addition to the standard die-cut rolls found on most label printers, you also have the flexibility to use continuous length rolls with the built-in cutter to make labels and signs up to 3 metres in length.



Many different types of labels can be printed with the TD-4000 and TD-4100N



The adhesive used in the Brother RD rolls has been certified safe for food labelling

Environmentally sourced rolls

Brother takes its environmental responsibilities seriously, and as such, the paper used in the manufacture of Brother RD label rolls is sourced from sustainable forests.

Brother RD labels also contain no Bisphenol-A, a common chemical used in the manufacture of inferior labels. As such, Brother RD labels are safe to use in the food industry, and also pose no hazard to the health of infants and young children

Pre-sized paper labels:

RD-S02E1 | 278/Roll 102 mm x 152 mm (white)

RD-S03E1 | 836/Roll 102mm x 50mm (white)

RD-S04E1 | 1.552/Roll 76 mm x 26 mm (white)

RD-S05E1 | 1.552/Roll 51 mm x 26 mm (white)

Continuous Label Tape

RD-S01E2 | 102mm x 44.3 metres (white)

TD-4000 / TD-4100N Specifications

Hardware: TD-4000 and TD-4100N	
Dimensions	173 mm (W) x 229 mm (D) x 158 mm (H)
Weight	TD-4000: 1.81 kg / TD-4100N: 1.83 kg
Roll compatibility	RD rolls (die-cut and continuous)
Print technology	Direct thermal
Maximum label width	102 mm
Minimum print length	25 mm
Max. print length	3 metres
Max. print width	98.6mm
Print resolution	300 dpi
Max. print speed	110 mm / second
Roll end detection	Yes
Interfaces	USB (ver 2.0 full speed) RS-232C serial (9 pin) Ethernet (10/100 Base-TX) (TD-4100N only)
Cutter Type	Full automatic
Buttons	3 (power on/off, label feed and label cut)
Status LED	3 colours (green, orange, red)
LCD display	None
Power	220-240V ~ 50/60Hz
Temperature	50°F to 95°F (10°C to 35°C)
Humidity	20% to 80% (without condensation)
Colour	Light grey & pearl white

Software: P-touch Editor 5

Font support / fonts supplied	All installed truetype fonts / 17
Font styles	11 styles: Normal, Bold, Italic, Outline, Shadow, Shadow Light, Horizontal, Surround, Frame Out, Inverted Text, Underline
Number of frames	126
Image file formats support	BMP, JPG, JPEG, PNG, TIF, GIF, DIB, WMF, EMF, ICO
Screen capture	Yes
Min. / max. label length	25mm / 3 metres
Tape margin settings	3 mm - 126 mm
Multi line printing	Yes
Multi block printing	Yes
Vertical printing	Yes
Rotate printing	Yes
Number of copies	9999
Mirror printing	Yes
Sequential numbering	1 - 9999 / A - Z / a - z
Barcode protocols	CODE39, CODE128, UCC/EAN-128(GS1-128), ITF(I-2/5), CODABAR(NW-7), UPC-A, UPC-E, EAN13(JAN13), EAN8, ISBN-2(EAN13 AddOn2), ISBN-5(EAN13 AddOn5), POSTNET, Laser Bar Code, GS1 DataBar(RSS)(GS1 DataBar Omnidirectional, GS1 DataBar Truncated, GS1 DataBar Stacked, GS1 DataBar Stacked Omnidirectional, GS1 DataBar Limited, GS1 DataBar Expanded, GS1 DataBar Expanded Stacked), PDF417(Standard, Truncated, Micro), QR Code(Model 1, Model 2, Micro), Data Matrix(ECC200 Square, ECC200 Rectangular), MaxiCode(Model2, Model3, Model4, Model5)
Database / file link support	csv, txt, mdb, xls, Microsoft SQL Server Database
Microsoft® Office add-in support	Microsoft Word / Excel / Outlook (Office 2000/2003/2007)
Date and Time Printing	Yes
Languages	English / Danish / Dutch / French / German / Italian / Norwegian / Portuguese / Spanish / Swedish / Finnish / Czech / Polish / Hungarian / Simplified Chinese / Russian / Turkish / Japanese

Included items

Included Items	Label printer 102mm continuous black on white label roll (2 metre starter roll) 51 mm x 26 mm black on white die cut label roll (60 labels) AC power cable USB cable CD-ROM containing software, drivers and user guide
----------------	--

TD-4000 / TD-4100N Specifications

	Firmware: TD-4000 and TD-4100N
Maximum print width	98.6 mm
Min. / max. label length	25 mm - 1 metre
Number of copies	1-999 (ESC/P P-touch Template)
Built-in barcode protocols	CODE39, CODE128, UCC/EAN-128 (GS1-128), ITF(I-2/5), CODABAR(NW-7), UPC-A, UPC-E, EAN13 (JAN13), EAN8, GS1 DataBar(RSS) (GS1 DataBar Omnidirectional, GS1 DataBar Truncated, GS1 DataBar Stacked, GS1 DataBar Stacked Omnidirectional, GS1 DataBar Limited, GS1 DataBar Expanded, GS1 DataBar Expanded Stacked), PDF417(Standard, Truncated, Micro), QR Code (Model 1, Model 2, Micro), Data Matrix (ECC200 Square, ECC200 Rectangular), MaxiCode
Printer control commands	Raster mode, ESC/P, P-touch template mode
Flash memory size	2048KB / Max 99 templates
Character code sets	Standard character code Windows-1252 Western Europe character code Windows-1250 Eastern Europe character code
Built in fonts	Bitmap fonts: Helsinki, Letter Gothic Bold, San Diego, Brougham Outline fonts: Helsinki, Brussels, Letter Gothic
Built in font sizes	Bitmap fonts: 24/32/48 dots Outline fonts: 33 - 400 dots (22 sizes)
Built in font widths	x1/2 width, x2 width, x2 height,
Built in font styles	Underline, Outline, Shadow, Outline+Shadow, Italic, Bold, Vertical

System requirements

Operating systems

Microsoft Windows XP®

Windows Vista® 32 bit & 64 bit

Windows 7® 32 bit & 64 bit

Windows Server® 2003 x86 (TD-4100N only)

Windows Server® 2008 / 2008 R2 (TD-4100N only)

Interfaces

USB (ver 2.0 full speed)

RS-232C serial (9 pin)

Ethernet (10/100 Base-TX) (TD-4100N only)

Hard disk space

More than 70MB

Memory

Microsoft® Windows® XP : 128MB minimum

Windows Vista® : 512MB minimum

Windows 7® 32 bit : 1 GB (minimum)

Windows 7® 64 bit : 2 GB (minimum)

Windows Server® 2003 : 256MB minimum (TD-4100N only)

Windows Server® 2008 : 512MB minimum (TD-4100N only)

Graphics adapter

SVGA with 16 bit colour depth minimum

Others

CD-ROM drive for installation

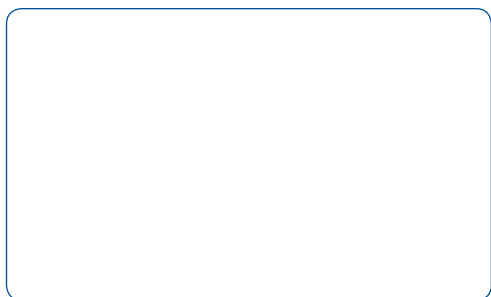
Microsoft® Office add-in

Microsoft® Word 2000/2002/2003/2007

Microsoft® Excel 2000/2002/2003/2007

Microsoft® Outlook® 2000/2002/2003/2007

brother®
at your side



Brother International Europe Ltd
Brother House, 1 Tame Street, Audenshaw,
Manchester M34 5JE
Tel: +44 (0)161-330 6531
www.brother.eu