

EN Quick Reference Guide

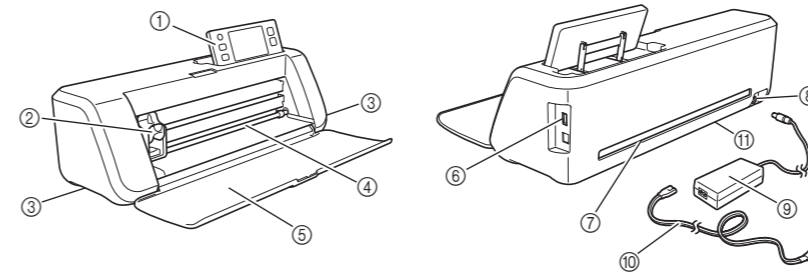
Be sure to first read the "Important Safety Instructions" in the Product Safety Guide. Refer to the Operation Manual (PDF version on the CD or printed version) for detailed instructions.

* In addition, the Operation Manual can be downloaded from the Brother Solutions Center (<http://support.brother.com>).

- Use a blade and mat combination appropriate for the material to be cut, as indicated in the following table. (Depending on your machine model, additional purchases may be required.) In addition, adjust the blade extension and cutting pressure.

IMPORTANT

The Main Parts



- ① Operation Panel
- ② Carriage
- ③ Handles
- ④ Feed Slot
- ⑤ Front Tray Cover
- ⑥ USB port (for a USB flash drive)
- ⑦ Slot
- ⑧ DC Power Jack
- ⑨ AC Adapter
- ⑩ AC Power Cord
- ⑪ Scanner Glass (Bottom of Machine)

Mat Selection

• This table provides general guidelines. Before making your project, test attaching the same material.

Material and its thickness	Mat		Sheet for fabric cutting	
	Standard mat	Low tack adhesive mat	Iron-on fabric appliqué contact sheet (white backing)	High tack adhesive fabric support sheet
Paper		✓* When cutting smooth paper		
Printer paper (80 g/m ² (0.1 mm))	⊘	✓		
Scrapbook paper (thin) (120 g/m ² (0.15 mm))		✓		
Scrapbook paper (medium-thick) (200 g/m ² (0.25 mm))	✓	✓*		
Cardstock (thin) (200 g/m ² (0.25 mm))	✓	✓*		
Cardstock (medium-thick) (280 g/m ² (0.35 mm))	✓	✓*		
Vellum, tracing paper (0.07 mm)		✓		
Poster board (thin) (280 g/m ² (0.35 mm))	✓	✓		
Poster board (thick) (400 g/m ² (0.5 mm))	✓	✓		
Fabric				
Thin cotton fabric (for quilt piece) (0.25 mm)	✓			✓
Thin cotton fabric (except for quilt piece) (0.25 mm)	✓		✓	
Flannel (for quilt piece) (0.6 mm)	✓			✓
Flannel (except for quilt piece) (0.6 mm)	✓		✓	
Felt (1 mm)	✓		✓	
Denim 14 oz (0.75 mm)	✓		✓	
Others				
Plastic sheet (PP) (0.2 mm)	✓			
Vinyl (0.2 mm)	✓			
Magnet (0.3 mm)	✓			
Sticker or seal (0.2 mm)	✓	✓		

Attaching the Material to the Mat

Note

- Craft paper or fabric covered with decorative layer (that can easily separate) such as lamé or foil is not recommended. If such media is used or tested it is recommended to clean the scanner glass at the bottom of the machine after every use.

With Fabric

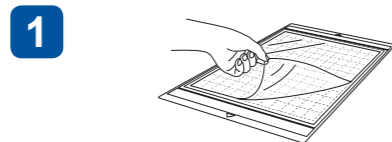
After referring to the table above, use a sheet for fabric cutting. Refer to the instructions included with the above sheet for details.

- Iron-on fabric appliqué contact sheet:
- Reinforces the fabric so that various patterns can be cut out.
 - Original texture may change because it remains attached to the back of fabric.

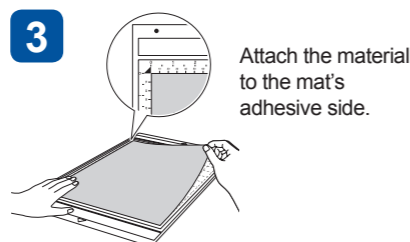
* For use with the standard mat. Do not place fabric backed with iron-on contact sheet directly onto a mat with high tack fabric support sheet.

- High tack adhesive fabric support sheet:
- By attaching this adhesive sheet to the standard mat, the adhesive strength of the mat is increased.
 - Depending on the shape, the pattern may not be cleanly cut.

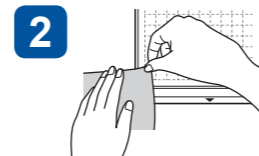
With Paper



- 1 Peel off the protective sheet.
- * Do not discard the protective sheet peeled off the mat.
 - * In order to maintain the adhesive strength, attach the protective sheet to the adhesive side of the mat after use.



- 3 Attach the material to the mat's adhesive side.



- 2 Before attaching the material to the mat, use a corner of the adhesive side of the mat to test attaching it.
- * Use the low tack adhesive mat with copy paper and smooth paper.
 - Since the standard mat has a high adhesive strength, materials may remain stuck to the mat, causing the mat to become unusable.



- 4 Firmly attach all of the material to the mat.
- * Make sure that there are no wrinkles and no part can curl off.

Blade (Holder)

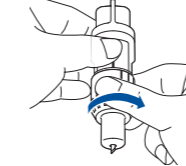
• This table provides general guidelines. Before making your project, perform trial cutting with the same material.

Material and its thickness	Blade scale setting	Cut pressure setting	Cutting blade	
			Standard cut blade (turquoise)	Deep cut blade (purple)
Paper	* Half cut			
Printer paper (80 g/m ² (0.1 mm))	3	-1	✓	
Scrapbook paper (thin) (120 g/m ² (0.15 mm))	3.5	0	✓	
Scrapbook paper (medium-thick) (200 g/m ² (0.25 mm))	4	0	✓	
Cardstock (thin) (200 g/m ² (0.25 mm))	4	0	✓	
Cardstock (medium-thick) (280 g/m ² (0.35 mm))	5	0	✓	
Vellum, tracing paper (0.07 mm)	3	0	✓	
Poster board (thin) (280 g/m ² (0.35 mm))	5.5	0	✓	
Poster board (thick) (400 g/m ² (0.5 mm))	7.5	4	✓	
Fabric				
Thin cotton fabric (for quilt piece) (0.25 mm)	4	4	✓	
Thin cotton fabric (except for quilt piece) (0.25 mm)	4	4	✓	
Flannel (for quilt piece) (0.6 mm)	6.5	4	✓	
Flannel (except for quilt piece) (0.6 mm)	6.5	4	✓	
Felt (1 mm)	5	5		✓
Denim 14 oz (0.75 mm)	5.5	6		✓
Others				
Plastic sheet (PP) (0.2 mm)	4	0	✓	
Vinyl (0.2 mm)	4	0	✓	
Adhesive Craft Vinyl (backing sheet : 0.1 mm)	1.5*	-1	✓	
Magnet (0.3 mm)	5.5	0	✓	
Sticker or seal (0.2 mm)	4	0	✓	
Sticker Sheet (backing sheet : 0.15 mm)	2*	-1	✓	

Adjusting the Blade Extension



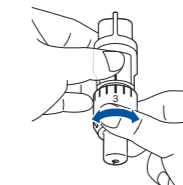
- Remove the protective cap.
- * After use, be sure to retract the blade into the holder and attach the protective cap.



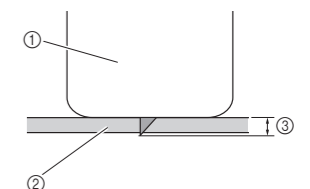
- Fully turn the cap to the right to extend the blade tip to its maximum.

Note

- After adjusting the blade extension, perform trial cutting. (Refer to the back of this sheet).



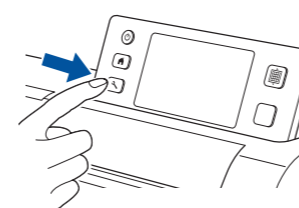
- After referring to the table above, set the blade extension to the indicated setting.
- * If the material is not cut cleanly, even after adjusting the setting, increase the setting in increments of 0.5. If material is cut after increasing the setting by more than 0.5, too much of the blade may be extended, causing it to break. If the blade breaks, it may no longer be able to cut.



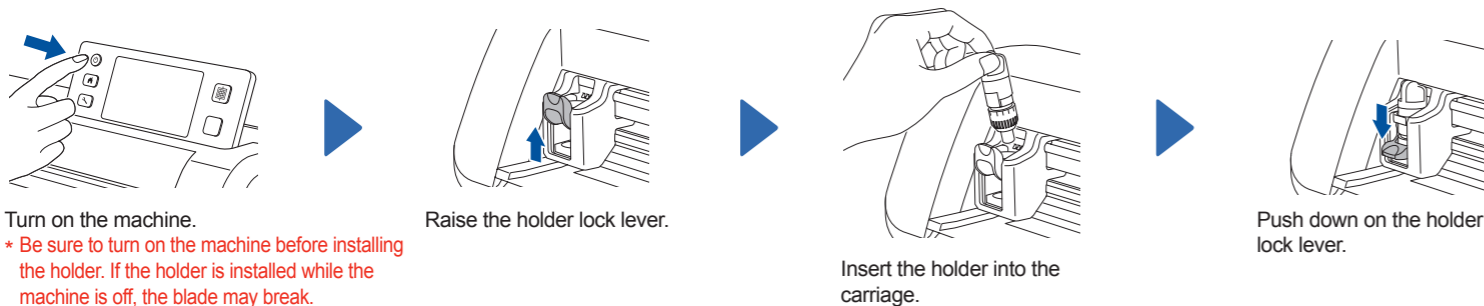
- ① End of holder cap
② Material that will be cut
③ Length of blade tip
- * The blade can cut even though it only slightly extends from the holder. If too much of the blade extends, it may break.

Adjusting the Cut Pressure

- * If the material is not cut cleanly, even after adjusting the blade extension, add more cutting pressure.



Installing the Holder



Turn on the machine.

* Be sure to turn on the machine before installing the holder. If the holder is installed while the machine is off, the blade may break.

Raise the holder lock lever.

Insert the holder into the carriage.

Push down on the holder lock lever.

Trial Cutting

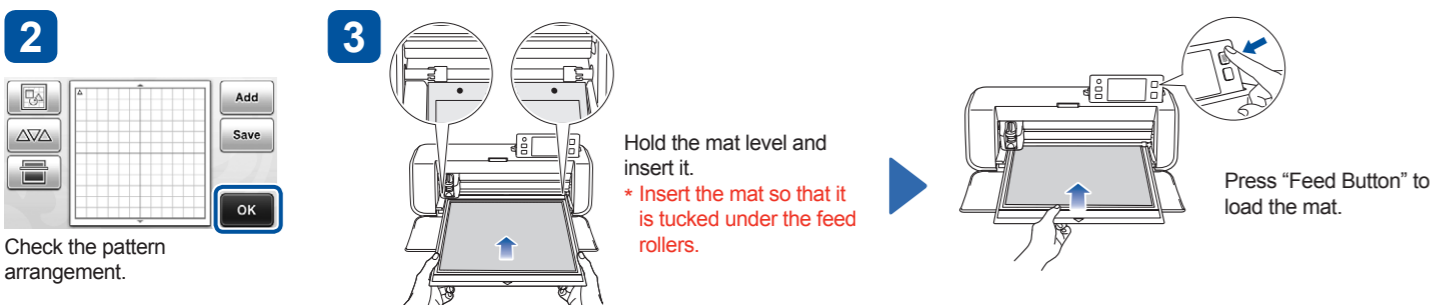


Select "Pattern".

Touch the "Test" key.

Select a test pattern.

Touch the "Set" key.

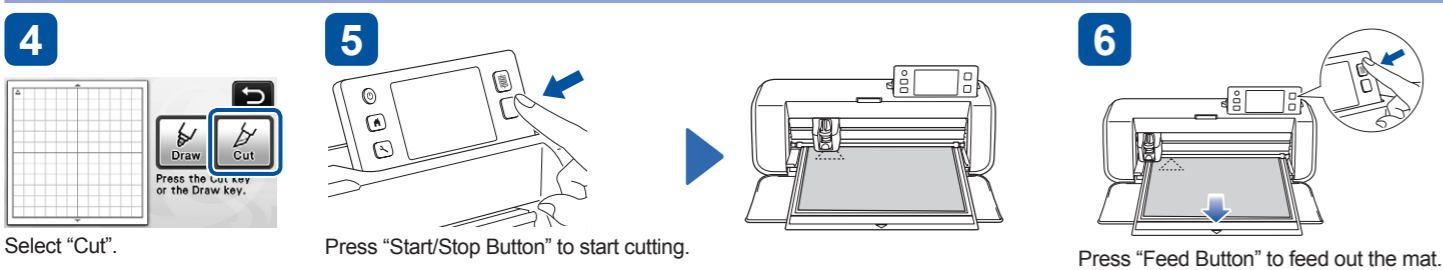


Check the pattern arrangement.

Hold the mat level and insert it.

* Insert the mat so that it is tucked under the feed rollers.

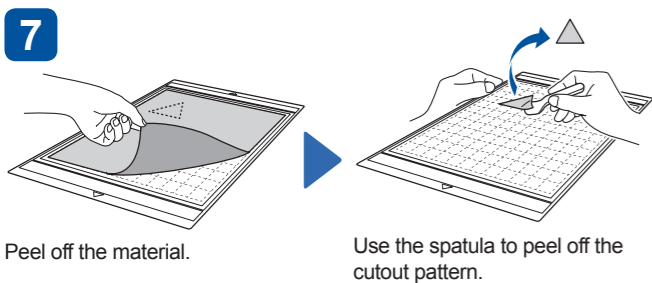
Press "Feed Button" to load the mat.



Select "Cut".

Press "Start/Stop Button" to start cutting.

Press "Feed Button" to feed out the mat.



Peel off the material.

Use the spatula to peel off the cutout pattern.

✓ If the material is cut cleanly, begin working on your project.

✗ If the material is not cut cleanly, refer to "Adjusting the Blade Extension" on the front of this sheet, and then adjust the blade extension.

Cutting a Selected Pattern (Clover)



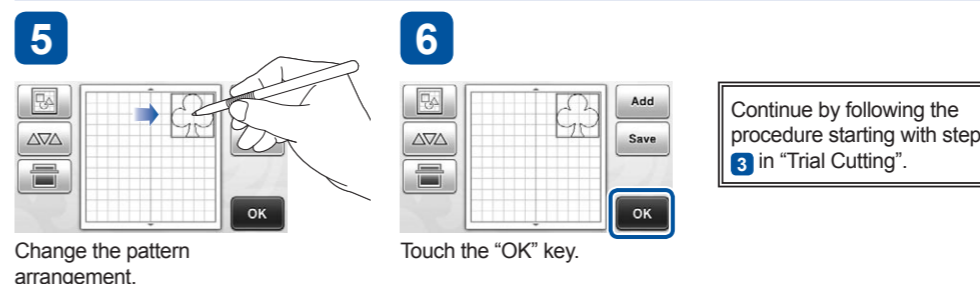
Select "Pattern".

Select the pattern category.

Select the pattern.

Edit the pattern.

Check the pattern arrangement.

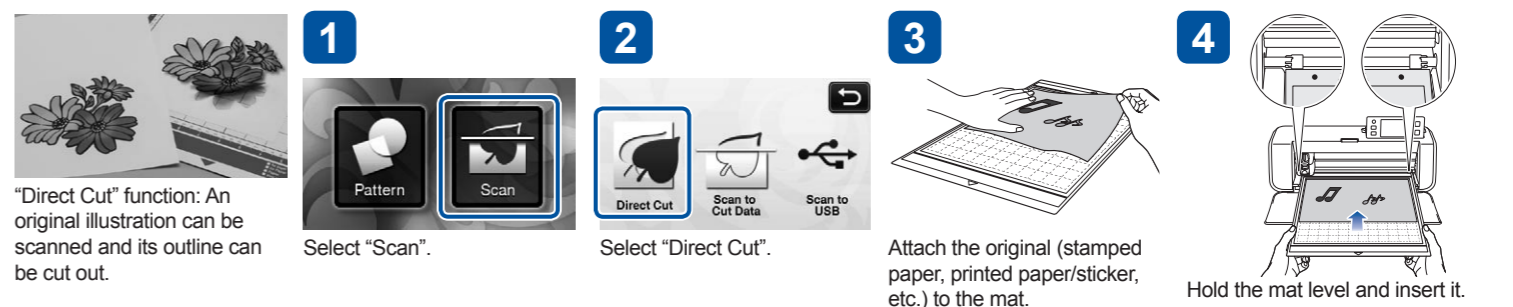


Change the pattern arrangement.

Touch the "OK" key.

Continue by following the procedure starting with step 3 in "Trial Cutting".

Using "Direct Cut" Mode to Cut a Pattern Drawn on Material



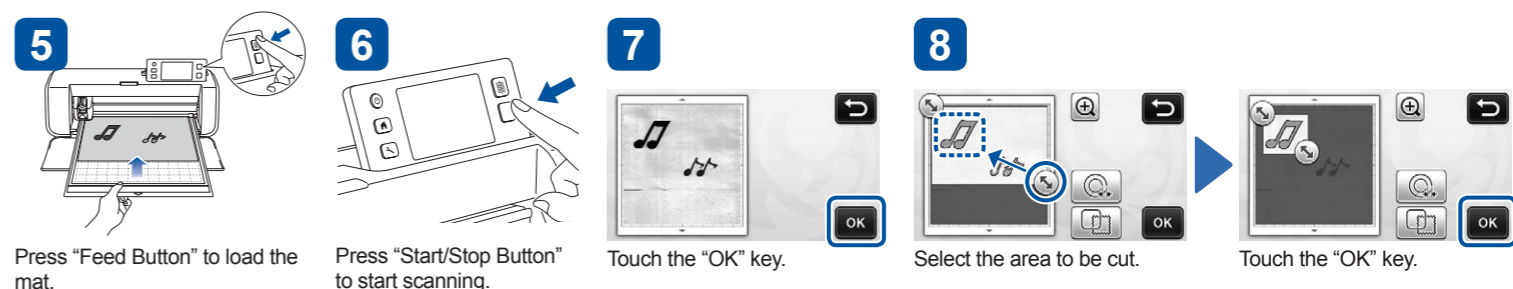
"Direct Cut" function: An original illustration can be scanned and its outline can be cut out.

Select "Scan".

Select "Direct Cut".

Attach the original (stamped paper, printed paper/sticker, etc.) to the mat.

Hold the mat level and insert it.



Press "Feed Button" to load the mat.

Press "Start/Stop Button" to start scanning.

Touch the "OK" key.

Select the area to be cut.

Touch the "OK" key.



Touch the "Cut" key.

Press "Start/Stop Button" to start cutting.

Press "Feed Button" to feed out the mat.

Peel off the material.

Use the spatula to peel off the cutout pattern.

Cleaning the Holder

Clean the holder after every use.

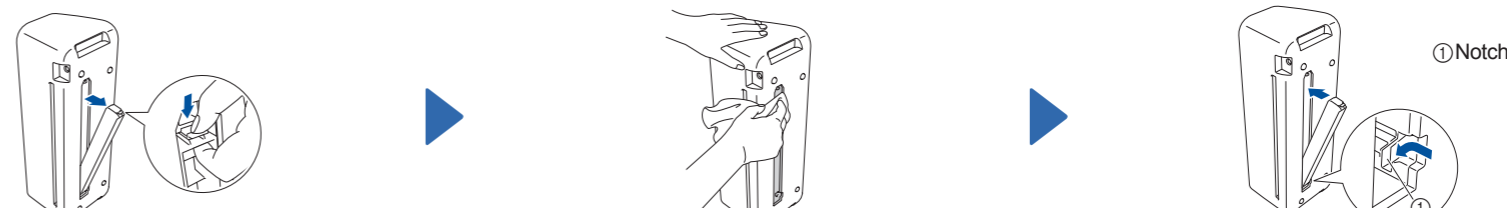


Twist off the holder cap to remove it.

Using a commercially available brush, clean off cuttings, lint and dust.
* Do not touch the blade.

Cleaning the Scanner Glass

If the image, design, or photograph does not scan properly to create cut data, clean the scanner glass.



Turn off the machine and store away the operation panel. While pushing in the tab at the bottom of the machine, pull up on the cover.

Dampen a soft lint-free cloth with water and firmly wring it out, and then wipe the scanner glass at the inside on the bottom of the machine.

Fit the tab on the cover into the notch of the installation slot, and then attach the cover to the machine.
* After cleaning, perform a test scan.