

# Driving Shop Floor Efficiency

Mobile printing solutions to optimise  
your workflow

RJ-Series | TD-Series



## Print and amend labels on location

**Lightweight,  
portable and fast.  
Designed to help  
streamline your  
business**

### Brother's Mobile Solutions

Brother's mobile printing solutions are about more than just printing on the go. They're about changing the way you work. The evolution in Brother's mobile printing technology gives retailers the ability to print on demand, where and when they need them. This enhanced mobility drives new retail processes that take advantage of point-of-transaction printing to improve productivity, accuracy and customer satisfaction.

We have designed our mobile solutions for the retail environment, with an intuitive process for workers to follow. From the warehouse to shop-floor, Brother's mobile printers are lightweight, durable, easy to use and suitable for all retail environments.

The mobile range incorporates thermal print technology with a variety of connectivity options, including; wireless and Bluetooth. We also offer a range of accessories to help suit your individual requirements.



# Improve productivity, accuracy and customer satisfaction



## Retail Landscape

The world of retail is constantly evolving, with shoppers using an increasing number of channels to purchase goods. In such a competitive market, the customer experience is key, and loyalty building to keep customer's spending.

On site, retailers must be mobile, with access to all information relating to stock, product ranges, promotions, payments and more. Mobile staff are responsible for changes within the store, whether its re-pricing goods, moving items to another location, or taking payments to ease the flow of traffic around the shop-floor.

As such, retailers need to be equipped with the necessary tools to make changes in-store quickly and effectively. Brother provide an array of Mobile Printing Solutions empowering retailers to make decisions that help streamline the business.

## Benefits of a Mobile Print Solution

- Produce receipts and labels on the move
- Remove processing time and costs
- Eliminate errors from handwritten labels
- Improve accuracy and customer experience



## Pharmacies

Higher demand in pharmacies means workers must process an increasing amount of prescriptions, whilst keeping errors to a minimum. Brother's Mobile Solutions integrate easily with all bespoke dispensing systems, allowing a smooth workflow. Using our TD4000 series Pharmacists can label bottles and medicine bags at the point of application, delivering the ultimate in speed, efficiency and accuracy.

### Perfect for:

- ✓ Medicine Label
- ✓ Bag Label
- ✓ Shelf Edge Label
- ✓ Receipt



Fast and efficient -  
Process an  
increasing amount  
of prescriptions,  
with minimum  
mistakes



**brother**  
at your side

## In-Store Labelling & Queue Busting

Retailers must be responsive to change on the shop-floor, whether it's seasonal reductions, or food that requires a sell by date. Retailers need to be mobile, with the power to scan, check and amend labels with speed and efficiency. In addition, taking payments and providing receipts away from the till ensures a more positive customer experience, and shorter queues.

### Perfect for:

- ✓ Price Markdown
- ✓ Receipt Printing
- ✓ Shelf Edge Label
- ✓ Promotional Label
- ✓ Sell by Date

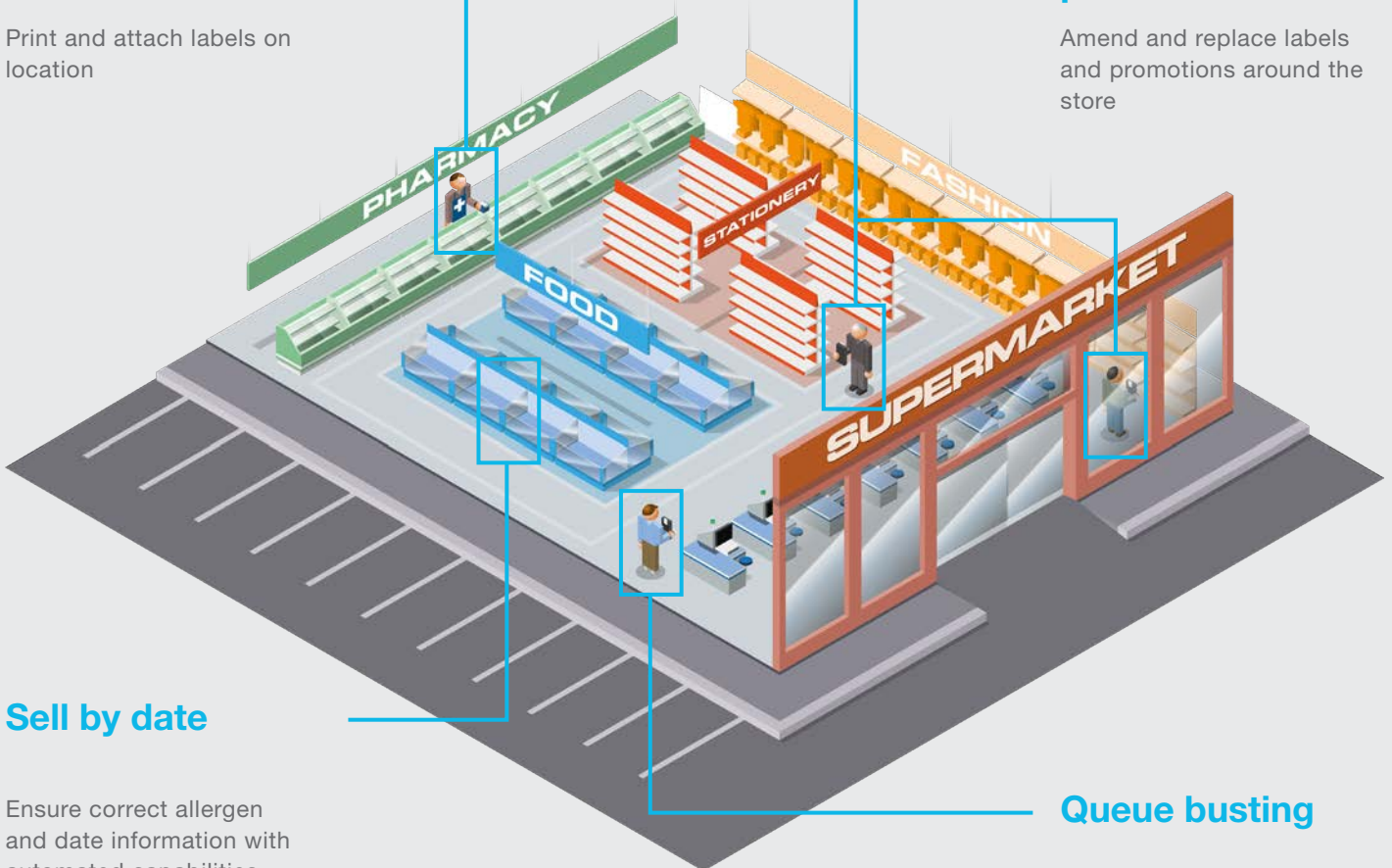


### Dosage and bag labels

Print and attach labels on location

### Price markdown / promotion

Amend and replace labels and promotions around the store



### Sell by date

Ensure correct allergen and date information with automated capabilities

### Queue busting

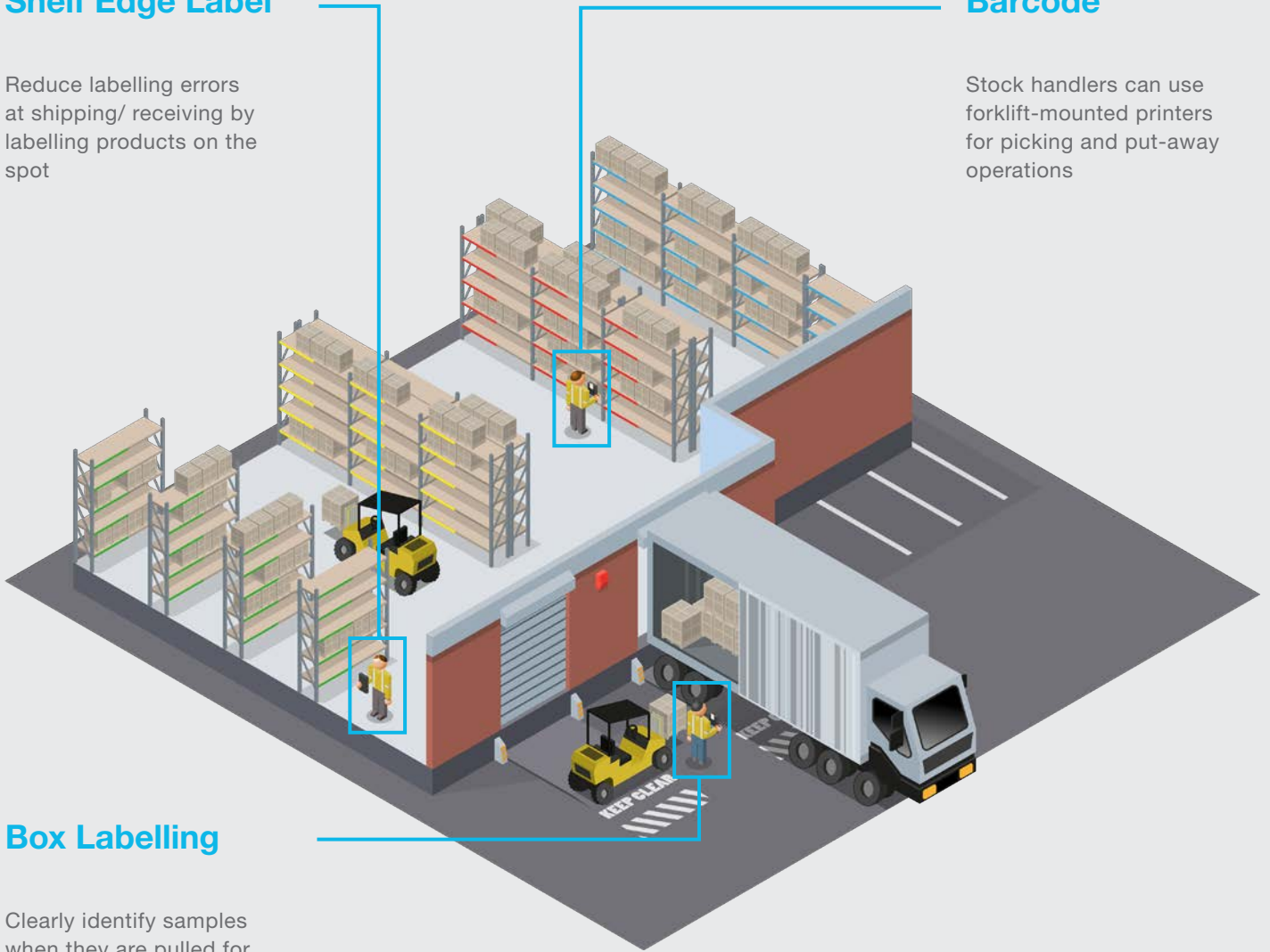
Print receipts and take payment to ease congestion

## Shelf Edge Label

Reduce labelling errors at shipping/ receiving by labelling products on the spot

## Barcode

Stock handlers can use forklift-mounted printers for picking and put-away operations



## Box Labelling

Clearly identify samples when they are pulled for inspection, testing and quality control



# Effective labelling, front to back

## Warehouse (back of house)

From the shop-floor to the warehouse, store operations must be smooth and seamless. Brother's Mobile Solutions help efficiency and organisation in the warehouse, ensuring workers can access items without any hassle. An effective strategy for labelling and re-labelling shelves, items and packages ensures that the shop-floor is functioning as efficiently as possible.

### Perfect for:

- ✓ Barcode Label
- ✓ Shelf Edge Label
- ✓ Package Label
- ✓ Palette Identification Label



## Case Study

**Chris Evans**  
Marston's PLC

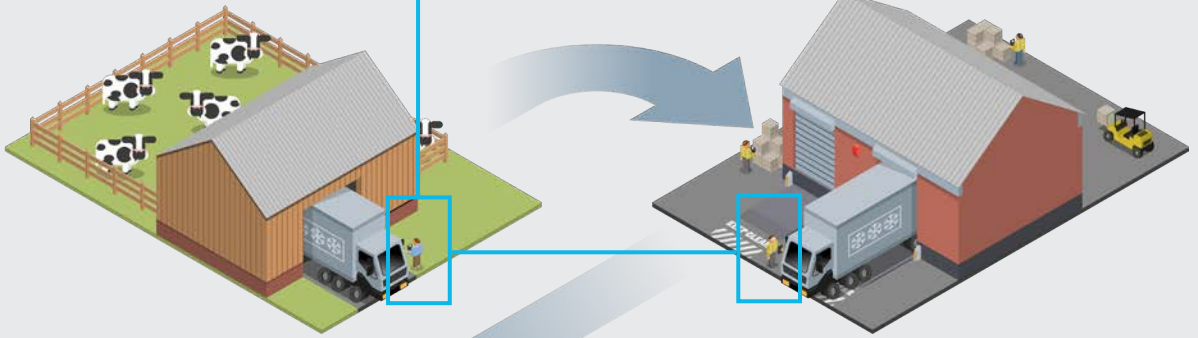


*We selected the Brother printers because they are small enough to house on a truck and robust enough for our shop-floor.*

*They are simple to use and quick to change labels and batteries allowing us to concentrate on picking customer orders quickly and efficiently."*



## Food travels from farm to factory



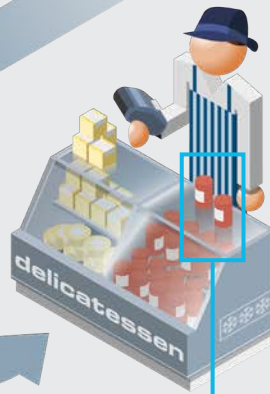
## Sell by date

Food removed from freezer and given appropriate label



## Allergen information

Food labelled via safety and compliance standards



## Case Study

**Michal Schiff**

Choice Meats Ltd.



*The Brother units have solved both of the issues we had when using the scales. Firstly, they are able to store all of our customer information, so operators can simply type a four-digit code into the touch-screen display and the printer will prepare a label including the customer's name and address along with the order date. Secondly, they are highly portable and battery powered, so our people can take them with them to whichever part of the building they are working in at that time.*





# Ensure food safety compliance



## Food Traceability

The worldwide standard of accountability for food, to improve food safety and the confidence of the consumer. Tracking food throughout all stages of production is critical to every grocery store, supermarket and eatery. Retailers must label items accurately and have the ability to make any necessary changes at the point of contact. With Brother's mobile print solutions, retailers are empowered to produce labels, and be compliant.

## Benefits

- ✓ Food Allergen Label
- ✓ Sell by Date
- ✓ Bag Label
- ✓ Price Markdown



# brother

at your side

## “At your side”.

We take a consultative approach to your mobile printing solution. Our Knowledge and experience in retail gives us the insight to find the best possible solution for your business. We are always available to provide any help or support you need.

### Easy to integrate

Brother provides all the necessary tools required for software developers to integrate printing into their mobile applications. Printer drivers are available for Windows OS, and Software Development Kits can be provided to support Windows Mobile\*, Android and iOS operating systems.

### P-touch Editor

Create your own custom labels with pixel precision by using this powerful software solution. With features such as support for over 15 barcode protocols, advanced image dithering to print high quality greyscale images, and the ability to link to data contained in Excel™ spreadsheets for batch printing of labels, any label design is possible.

### AirPrint and MFi support

Easily connect to, and print from Apple devices thanks to AirPrint and MFi support.

### Extended Printer Command Support

With support for ZPL II emulation, CPCL emulation in addition to Brother ESC/P commands, developers can easily integrate mobile printing into existing legacy systems.

### Customise your Solution

We have a range of accessories made to suit all your business requirements. We have solutions to help mobilise your workforce and ensure that the device is usable in any environment.

### Peace of mind

You can rest assured with our 3 year warranty programme, which comes as standard for all Brother Mobile Solutions.



## RJ Series

These mobile printers are lightweight, compact and extremely rugged, printing up to 4" receipts, quotes, invoices and labels with ease improving efficiency, productivity and customer service.

- Versatile connectivity - compatible with a wide range of mobile devices and operating systems including iOS, Windows and Android
- Fast, intuitive and easy to use
- Lightweight and durable (IP54 rated)
- Easy to integrate - simple integration into existing applications with free software development kit (SDK)\*

Series	Models	Print Width	Connectivity	Durability (IP54)	Weight
RJ-2000	RJ-2030	2"	USB, BT	2.5m	0.47Kg
	RJ-2050		USB, BT (inc MFi), Wi-Fi (inc. Airprint)		
	RJ-2140		USB, Wi-Fi (inc. Airprint)		0.55Kg
	RJ-2150		USB, BT (inc. MFi), Wi-Fi (inc. Airprint)		
RJ-3000	RJ-3050	3"	USB, BT, Wi-Fi (inc. Airprint)	1.2m	0.75Kg
	RJ-3150			1.8m	
RJ-4000	RJ-4030	4"	USB, Serial, BT	1.8m	0.91Kg
	RJ-4040				



## TD Series

Bridging the gap between desktop and mobile printing, the TD range of compact label and receipt printers offer the performance, features and media capacity of desktop printers but can be powered virtually anywhere in the workplace.

- Versatile and transportable, this compact printer is designed specifically for on-demand printing
- Customisable, it integrates with your existing systems to give you flawless receipt and label printing
- Wide range of accessories available including a touchscreen keypad with programmable buttons for frequently used templates

Series	Models	Print Width	Connectivity	Media
TD-2000	TD-2020	56mm	USB, Serial*	Label/Receipt/ Wristband
	TD-2120N		USB, Serial*, USB Host, Wired LAN	
	TD-2130N			
TD-4000	TD-4000	98.6mm	USB, Serial	Label/Receipt
	TD-4100N		USB, Serial, Wired LAN	

\*via optional adaptor



# TD Series Optional Accessories

## Customise your Solution

Brother has designed and engineered a wide range of accessories to help customise the solution to meet your specific requirements.



## Power and Additional Options

### PA-WI-001

TD-2000 Series only  
**Wi-Fi WLAN Interface**  
TD-2120N  
TD-2130N



### PA-BI-001

TD-2000 Series only  
**Bluetooth Interface**  
TD-2120N  
TD-2130N



### PA-SCA-001

TD-2000 Series only  
**Serial Adapter**  
TD-2020  
TD-2120N  
TD-2130N



### PA-TDU-001

TD-2000 Series only  
**Touch Panel Display**  
TD-2120N  
TD-2130N



### PA-BB-001

TD-2000 Series only  
**Battery Charging Unit\***  
TD-2120N  
TD-2130N



\*Requires PA-BT-4000LI

### PA-BT-4000LI

TD-2000 Series only  
**Li-ion rechargeable Battery\***  
TD-2120N  
TD-2130N



\*Requires PA-BB-001

### PA-LP-001

TD-2000 Series only  
**Label Peeler**  
TD-2120N  
TD-2130N



## Media

### RD-S05E1

Complete TD-series  
**Die Cut Labels Roll**  
**Label size:** 51 mm x 26 mm  
**Quantity:** 1552 per roll  
**Colour:** white



### RD-S07E5

Complete TD-series  
**Continuous Receipt Roll**  
**Size:** 58 mm x 86 m  
**Colour:** white



### RD-S01E2

TD-4000 Series only  
**Continuous Receipt Roll**  
**Size:** 102 mm x 44.3 m  
**Colour:** white



### RD-S02E1

TD-4000 Series only  
**Die Cut Labels Roll**  
**Label size:** 102 mm x 152 mm  
**Quantity:** 278 per roll  
**Colour:** white



### RD-S03E1

TD-4000 Series only  
**Die Cut Labels Roll**  
**Label size:** 102 mm x 50 mm  
**Quantity:** 836 per roll  
**Colour:** white



### RD-S04E1

TD-4000 Series only  
**Die Cut Labels Roll**  
**Label size:** 76 mm x 26 mm  
**Quantity:** 1552 per roll  
**Colour:** white



# TD Series Specification

	TD-2020	TD-2120N	TD-2130N	TD-4000	TD-4100N
	2 INCH			4 INCH	
<b>Printing</b>					
Print technology	Direct Thermal				
Print speed	152mm/sec			110mm/sec	
Resolution	203dpi		300dpi		
Max. print width	56mm			98.6mm	
Min. print length	6mm			25.4mm	
Max. print length	1000mm			3000mm	
Media sensor type	Gap (Transmissive), Bar (Reflective)			Gap (Transmissive)	
Media sensor location	Gap (Fixed), Reflective (Adjustable)			Gap (Fixed)	
Tear off release mode	✓	✓	✓	Auto Cutter	
<b>Connectivity</b>					
USB	✓	✓	✓	✓	✓
Serial (via adapter)*	✓	✓	✓	✓	✓
Wired LAN		✓	✓		
USB Host Port		✓	✓		
Bluetooth (option)		✓	✓		
Wireless LAN (option)		✓	✓		
<b>General</b>					
Dimensions (mm)	110 (w) x 215 (d) x 172 (h)			73 (w) x 229 (d) x 158 (h)	
Weight	1.32kg	1.34kg		1.81kg	1.83kg
Control panel	3 button 2 LED			3 button 1 LED	
Touch Panel Display (option)		✓	✓		
Operating system support	(Windows XP/Vista 7/8/10), (Linux)	(Windows XP/ Vista 7/8/10) (Windows Server 2008/2008R2) (Windows Server 2012/2012R2), (Linux)		(Windows XP/Vista 7/8/10), (Linux)	(Windows XP/ Vista 7/8/10) (Windows Server 2008/2008R2) (Windows Server 2012/2012R2), (Linux)
Supported commands	P-touch Template, ESC/P, Raster, ZPL II emulation			P-touch Template, ESC/P	

\*For TD-2000 Series Only

# RJ Series Optional Accessories

## Customise your Solution

Brother has designed and engineered a wide range of accessories to help customise the solution to meet your specific requirements. Our accessories help retailers mobilise their workforce with on body solutions. They also help cope with power and battery demands for extended use.



## Power

### PA-BT-003

RJ-2000 Series only

**Li-ion rechargeable Battery**

RJ-2030 | RJ-2050  
RJ-2140 | RJ-2150



### PA-BT-001A PA-BT-001B

RJ-3000 Series only

**Li-ion rechargeable Battery**

RJ-3150 | RJ-3050



### PA-BT-4000LI

RJ-4000 Series only

**Li-ion rechargeable Battery**

RJ-4030 | RJ-4040



### PA-CD-600UK

Complete RJ Series

**AC Adapter (UK)**

Entire RJ Range



### PA-CD-600EU

Complete RJ Series

**AC Adapter (EU)**

Entire RJ Range



### PA-CD-600CG

Complete RJ Series

**Car Adaptor (cigarette)**

Entire RJ and PJ Range



### PA-CD-600WR

Complete RJ Series

**Car Adaptor (wired)**

Entire RJ and PJ Range



## Additional Options

### PA-BC-002

RJ-2000 Series only

**Battery Charging Unit (wall mountable)**

RJ-2030 | RJ-2050  
RJ-2140 | RJ-2150



### PA-CR-001

RJ-3000 Series only

**Charging Cradle**

RJ-3050 | RJ-3150



### PA-BC-001

RJ-3000 Series only

**Battery Charging Unit**

RJ-3050 | RJ-3150



### PA-MCR-4000

RJ-4000 Series only

**Magnetic Card Reader**

RJ-4030 | RJ-4040



### PA-CM-4000

RJ-4000 Series only

**Car Mount Kit**

RJ-4030 | RJ-4040



### PA-SS-4000

Complete RJ Series

**Shoulder Strap**

Entire RJ Range



### PA-WC-4000

RJ-4000 Series only

**Environmental Case**

RJ-4030 | RJ-4040



## Media Options

### RD-R03E5

RJ-2000 Series only

**Continuous Receipt Roll**

**Size:**  
58 mm x 12 m  
**Colour:** white



### RD-Q04E1

RJ-2140 & RJ-2150 only

**Die-cut Labels Roll**

**Label Size:**  
51 mm x 26 mm  
**Colour:** white  
**Quantity:**  
450 per roll



### RD-P08E5

RJ-3000 Series only

**Continuous Receipt Roll**

**Width:**  
76 mm x 35.3 m  
**Colour:** white



### RD-P09E1

RJ-3150 only

**Die Cut Labels Roll**

**Label size:**  
76 mm x 44 mm  
**Colour:** white  
**Quantity:**  
335 per roll



### RD-M01E5

RJ-4000 Series only

**Continuous Receipt Roll**

**Width:**  
102 mm x 27.5 m  
**Colour:** white



### RD-M03E1

RJ-4000 Series only

**Die Cut Labels Roll**

**Width:**  
102 mm x 152mm  
**Colour:** white  
**Quantity:**  
70 per roll



# RJ Series Specification

## Media Types

Receipt

Labels

## Printing

Print speed

Resolution

Max. print width(s)

## Connectivity

USB

Serial

Wireless LAN

Bluetooth

AirPrint

MFi

## Others

IP Rating

Drop protection (m)

Weight (with battery)

Dimensions W, H, D (mm)

	RJ-2030	RJ-2050	RJ-2140	RJ-2150	RJ-3050	RJ-3150	RJ-4030	RJ-4040
	2 INCH				3 INCH		4 INCH	
Receipt	✓	✓	✓	✓	✓	✓	✓	✓
Labels			✓	✓		✓	✓	✓
Print speed	152mm/sec				127mm/sec		127mm/sec	
Resolution	203dpi				203dpi		203dpi	
Max. print width(s)	54mm	54mm (receipt) 51mm (labels)			72mm	104mm		
USB	✓	✓	✓	✓	✓	✓	✓	✓
Serial							✓	✓
Wireless LAN		✓	✓	✓	✓	✓		✓
Bluetooth	✓	✓		✓	✓	✓	✓	
AirPrint		✓	✓	✓	✓	✓		✓
MFi		✓		✓				
IP Rating	IP54				IP54		IP54	
Drop protection (m)	2.5m				1.2m	1.8m	1.8m	
Weight (with battery)	465g	545g			610g	680g	850g	
Dimensions W, H, D (mm)	122, 57, 99.3		150, 73, 99.3		113, 80, 186	116, 82, 189	162, 176, 77	



**brother**  
at your side

Contact:

**[www.brother.eu](http://www.brother.eu)**

**Brother International Europe Ltd**

Brother House, 1 Tame Street, Audenshaw,  
Manchester M34 5JE

Tel: +44(0)161 330 6531

Fax: +44(0)161 330 5520