



Compact
without
compromise

Simple, intelligent workflows

Convenient document scanning, wherever you are

Make everyday document scanning simple with our stylish, compact document scanners, expertly designed for use in any location.

Whether at home, in the office, or at a shared workspace, our fully portable scanners are easy to set up, so you can quickly organise, scan and share documents, wherever you are.

In addition, this range comes with the latest editing and workflow software, so you can easily create, adapt and manage your documents to keep on top of your workload.



Across the range...

Save space wherever you work

Our compact document scanners are ideal when space is limited.

Measuring slightly wider than a sheet of A4 paper, they can free up room on your desk and reduce clutter where space is often at a premium - making them the perfect choice for any working environment. From home offices, to receptions and medical departments, no matter where you work, you can rely on our new range of compact, portable scanners.

Versatile media handling

The time-saving 20 sheet Automatic Document Feeder (ADF) manages various sizes and thickness of paper (up to 128gsm) with ease. Whilst the dedicated card slot comfortably handles plastic ID cards up to 1.02mm.

High performance, every time

No matter where you scan from, you will get the same high performance, every time. With scan speeds of up to 60 sides per minute (2-sided), documents are saved quickly and effortlessly to file, email server, USB host, network or you can scan them directly to your PC.





Industry-leading software

Easily convert, edit and share documents with Power PDF. Available as standard on both the ADS-1300 and ADS-1800W, it gives you the flexibility to edit documents in seconds.

Both models come with Kofax PaperPort, a document management solution with OCR that allows you to create simple workflows, so you can easily share, search and organise documents.

The ADS-1800W is also compatible with Brother product upgrade Barcode Utility, enabling you to manage documents with barcodes and automatically file them to a designated location.



Powerful scanning from any location

Scanning on the move with the ADS-1300

Scan and save your paper documents whilst you are out of the office. Once plugged into your laptop, you can use the ADS-1300 to scan documents when it is most convenient for you.

Freedom to scan from anywhere without a PC with the ADS-1800W

Scanning from any location just got easier

With one-touch scanning, reduce the time you spend on repetitive tasks and set up shortcuts to frequently used scan to locations.

Compatible with most external batteries or powerbanks, there is no need for the ADS-1800W to be connected to a laptop or PC to powerfully scan your documents from any location. With wireless network connectivity and scan to cloud functionality built in, you can truly scan from anywhere.



Powerful,
intelligent
scanning



Compact,
portable document
scanner



SCAN



- Scan up to 30 pages / 60 images per minute
- 20 Sheet Automatic Document Feeder (ADF)
- Power directly via USB Type-C
- Control up to 3 scan activity shortcuts direct from the device
- Dedicated plastic ID card slot
- Scan to USB Host or Cloud via PC
- OCR and PDF editing software included
- Optional paper output tray available

ADS-1300

Compact, portable
wireless document
scanner



SCAN



WIRELESS

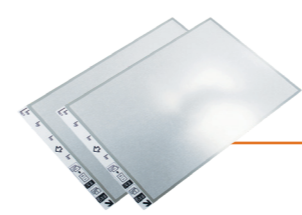


- Scan up to 30 pages / 60 images per minute
- Large 7.1cm touchscreen
- 20 Sheet ADF Automatic Document Feeder (ADF)
- Power directly via USB Type-C
- Create up to 20 one-touch scan activity shortcuts
- Dedicated plastic ID card slot
- Create up to 25 preset scan to profiles
- Supports Brother Mobile Connect App
- OCR and PDF editing software included
- Compatible with Brother Product Upgrade Barcode Utility
- Optional paper output tray available

ADS-1800W



Optional accessories



CARRIER SHEETS

CS-A3301



OUTPUT TRAY

OT-1001C



PICKUP ROLLER

PUR-2001C



LEGACY KIT

LK-1001CEU / LK-1001CUK



SEPARATION PAD

SP-2001C

Workflow Solutions

Automatically route documents with Barcode Utility*

Reduce the labour-intensive task of scanning several documents, saving and renaming them. Barcode Utility means that documents with a barcode can be scanned and automatically saved to the required location, automating the separation of a batch of documents and routing each individual file to the designated folder on your network.

*Requires Additional Activation



ADS-1800W
ADS-1300

Specification and Features

- 1 All supported using downloadable software, for a full list of supported OS and to download the latest drivers and software visit the Brother Solutions Centre <http://solutions.brother.com>
- 2 With 80gsm paper
- 3 Requires an Internet connection
- 4 Visit support.brother.com for a full list of supported OS and to download the latest drivers and software

User Interface

- 7.1cm (2.8") Colour Touchscreen, Keys
- LED, Keys

Document Handling

- Up to 30ppm A4 colour and mono 2 sided scan speed (300dpi)
- 20 page Automatic Document Feeder (ADF) capacity², Single Card (Portrait) via Card Slot (Using Separation Switch)
- Long Paper upto 5000mm (300dpi)
- Media Sizes ADF Width 51 - 215.9mm, Height 70 - 355.6mm, Card Slot Width 51-55mm, Height 80.825-90.375mm
- Media Weights and Thickness ADF 51.8 - 128 gsm (Paper 0.08-0.14mm), Plastic Card - Without Emboss (0.76 - 1.02mm), Embossed (1.24mm)

Connectivity

- USB Type-C 3.2 Gen1, USB 2.0 Host (Rear) up to 128GB
- 2.4GHz: IEEE 802.11b/g/n, Wi-Fi Direct™ 802.11g/n

Scan to Options

- Supported file formats: Including (Standard)PDF, PDF/A-1b, JPEG, TIFF
- Supported file formats: Including Secured PDF, Signed PDF
- PC (Image)¹, Workflow¹, SharePoint(On Premise)¹, Cloud^{1,3}, Direct Scan (USB)
- Network (SMB), Email Server, FTP/SFTP, SharePoint(On Premise), Brother Webconnect³, Brother Cloud Apps³

Scan Functions

- Scan Resolution up to 600 x 600dpi (device), 1200 x 1200dpi (Driver¹)
- Continuous Scan¹, Resume Scan¹, 3 Hard Key Shortcuts
- Auto Start Scan, Continuous Scan, Resume Scan, Secure Function Lock 3.0, Touchscreen Settings lock, 20 Touchscreen Shortcuts

Software/Driver Downloads¹

- Windows:** Brother iPrint&Scan for Desktop, Kofax PaperPort 14SE with OCR, Kofax Power PDF Standard v5, Remote Setup, Easy Setup
- macOS:** Brother iPrint&Scan for Desktop, Kofax Power PDF Standard v3, Remote Setup, Easy Setup
- Windows:** Newsoft - Presto! Bizcard 6, Image Folio, BRAdmin Light, Brother BRAdmin Professional 4
- macOS:** Newsoft - Presto! Bizcard 7, Image Folio
- Windows:** TWAIN, WIA **Linux:** SANE
- macOS:** ICA
- macOS:** AirPrint Scan
- Mobile App:** Brother Mobile Connect (iOS/Android)

Consumables and Optional Upgrades

- Carrier Sheet 500 times (Pack of 2): CS-A3301
- Output Tray: OT-1001C
- Pickup Roller 100,000 sheet: PUR-2001C, Separation Pad 10,000 sheet: SP-2001C
- Legacy Kit AC Adapter with barrel connector, USB Cable (Type-C - Type-A): LK-1001CUK, LK-1001CEU
- USB Type-C AC Power Adapter: PA-AD-004UK, PA-AD-004EU
- Barcode Utility¹ (Requires additional activation)

COOL EARTH

As well as our market-leading, carbon-neutral toner remanufacturing program, we have been partners with global charity, Cool Earth for well over a decade. A UK-based non-profit organization, Cool Earth helps protect endangered rainforest, combats against climate change and provides employment for local people.

Together, we have supported 7 communities across Papua New Guinea and the Peruvian Amazon in protecting around 70,000 hectares of rainforest from deforestation. As custodians of this land, these local communities have kept almost 27 million trees standing which absorb and store over 38 million tonnes of CO2 from the earth's atmosphere.



Protect
69,810

Hectares
of rainforest



Keep
26,807,633

Trees
standing



Store
38,415,672

Tonnes of
carbon stores



Figures correct as of April 2023

Disclaimer: All specifications correct at the time of printing and are subject to change.
Brother is a registered trademark of Brother Industries Ltd. Brand product names are registered trademarks or trademarks of their respective companies.

brother

at your side

Contact:

www.brother.eu

Brother International Europe Ltd

Brother House, 1 Tame Street, Audenshaw,
Manchester M34 5JE

Tel: +44(0)161 330 6531

Fax: +44(0)161 330 5520